

Along the tracks, around the
Town:

Moredon to Chiseldon

and
auctions galore...

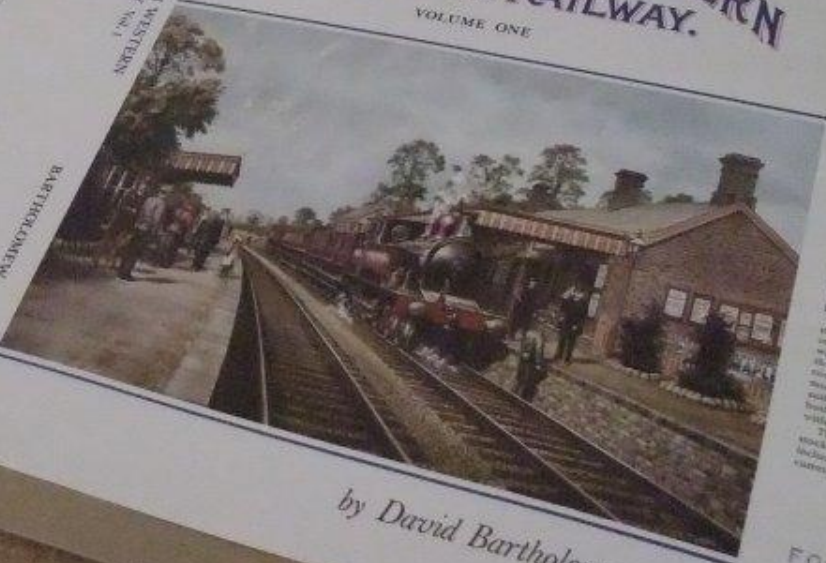
MIDLAND & SOUTH WESTERN JUNCTION RAILWAY

MIDLAND & SOUTH WESTERN JUNCTION RAILWAY

THE MIDLAND & SOUTH WESTERN JUNCTION RAILWAY VOL. 1

MIDLAND & SOUTH WESTERN JUNCTION RAILWAY.

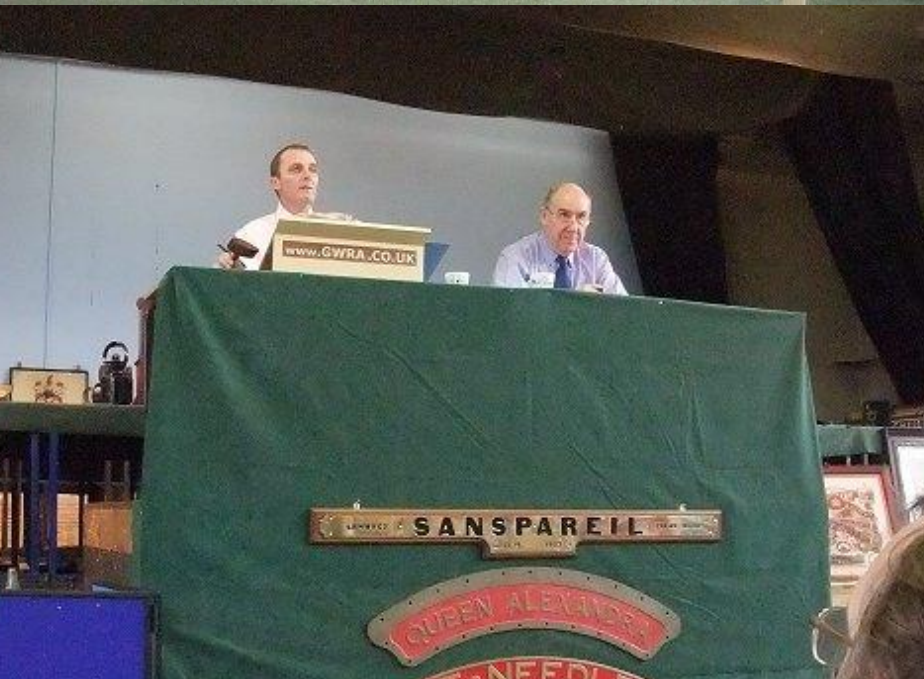
VOLUME ONE

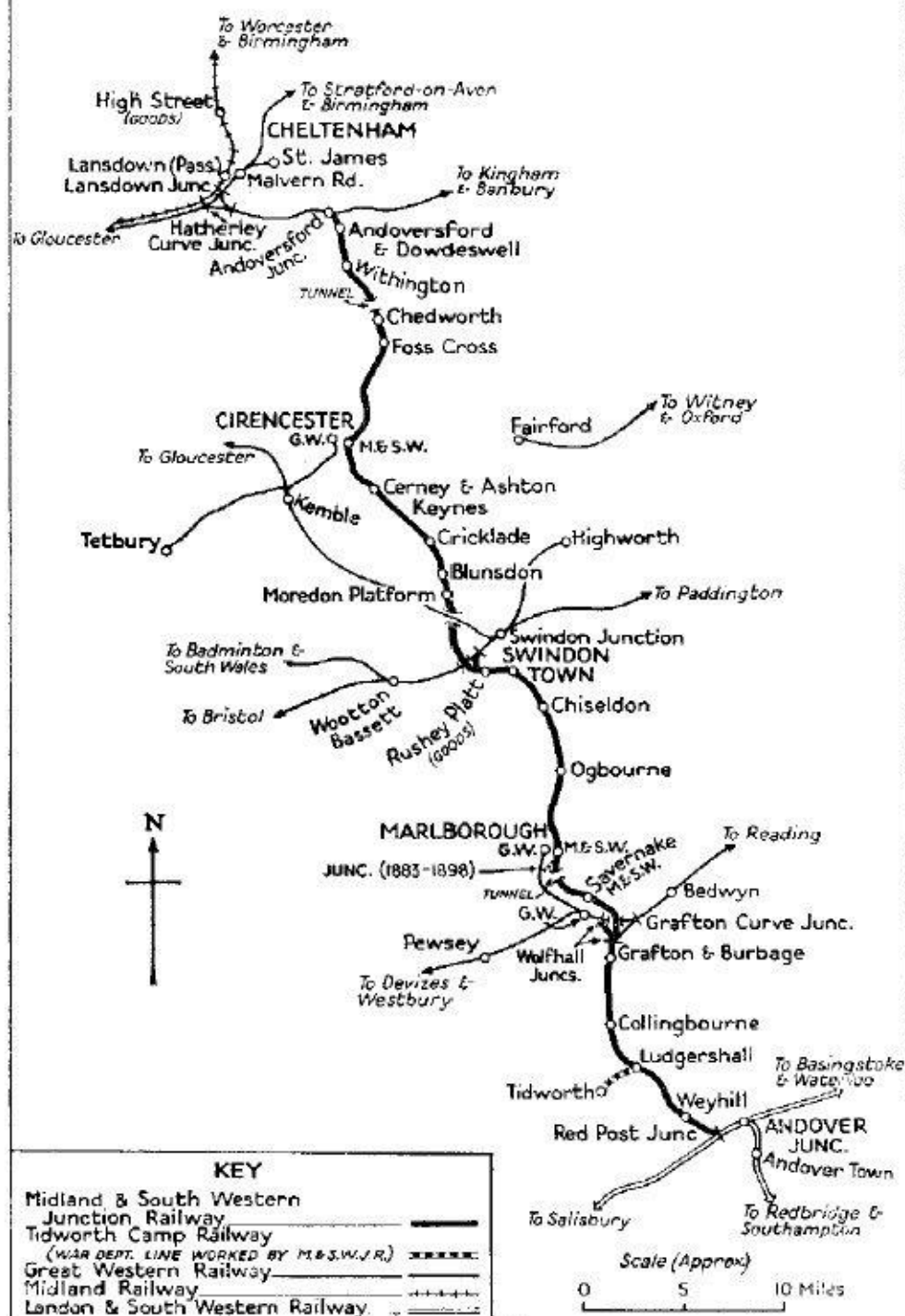


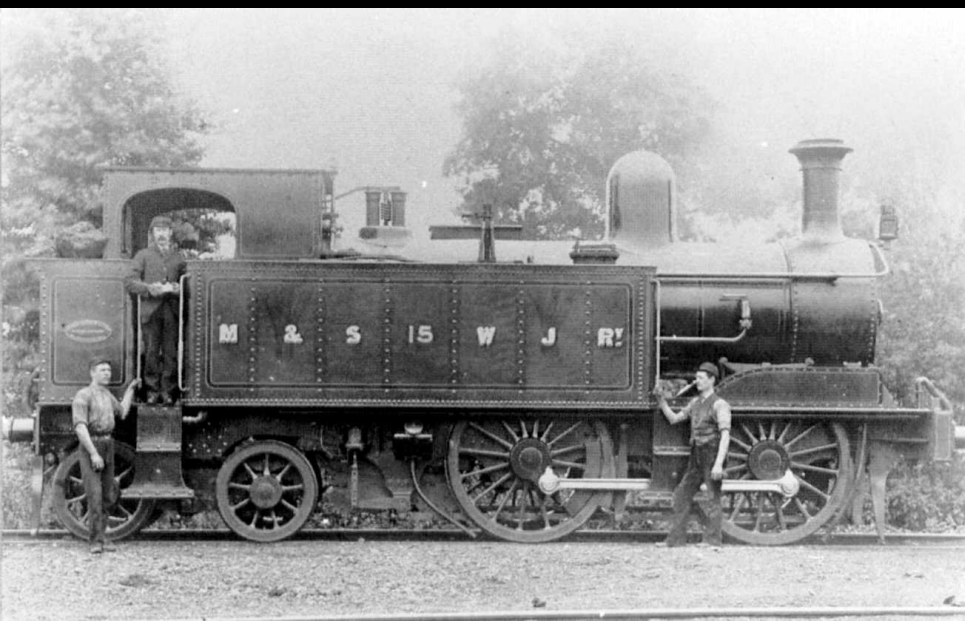
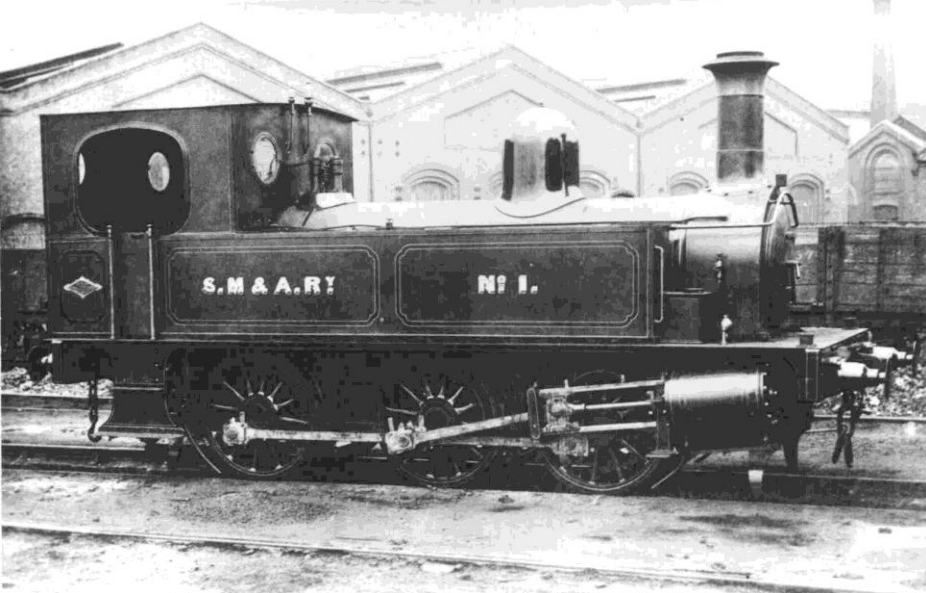
by David Bartholomew

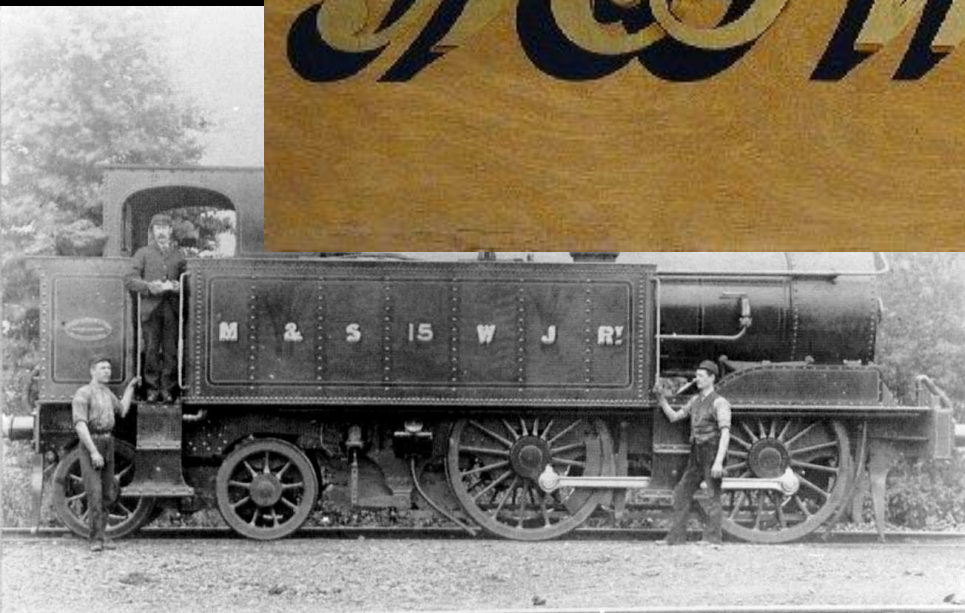
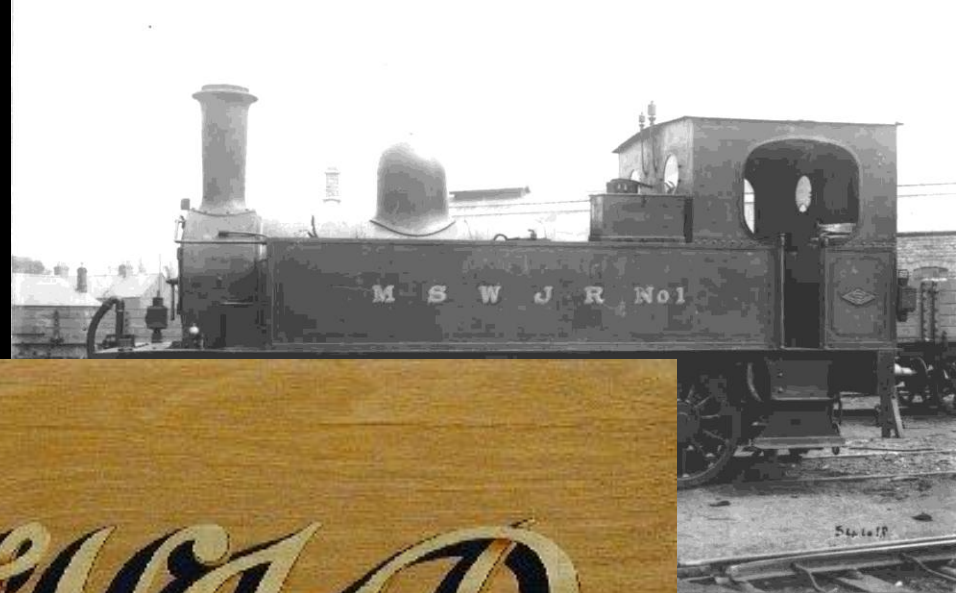
The Midland & South Western Junction Railway was formed in 1825 when the Midland Railway Company and the South Western Railway Company agreed to join their lines between London and Salisbury. The railway was the first to be built in the south of England and it played a major part in the development of the railway system in the south of England. The railway was built by the Midland Railway Company and the South Western Railway Company and it was the first to be built in the south of England. The railway was built by the Midland Railway Company and the South Western Railway Company and it was the first to be built in the south of England. The railway was built by the Midland Railway Company and the South Western Railway Company and it was the first to be built in the south of England.

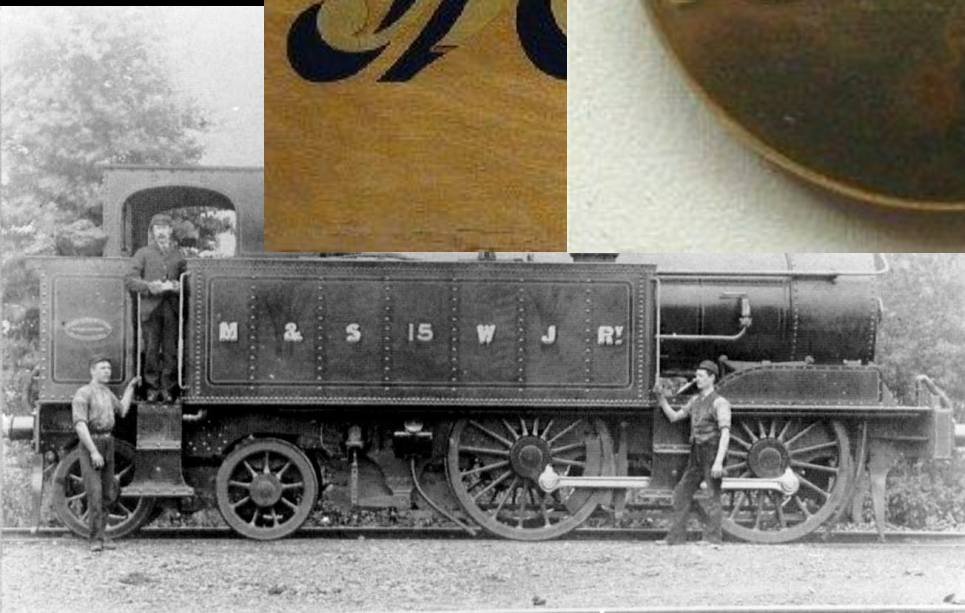
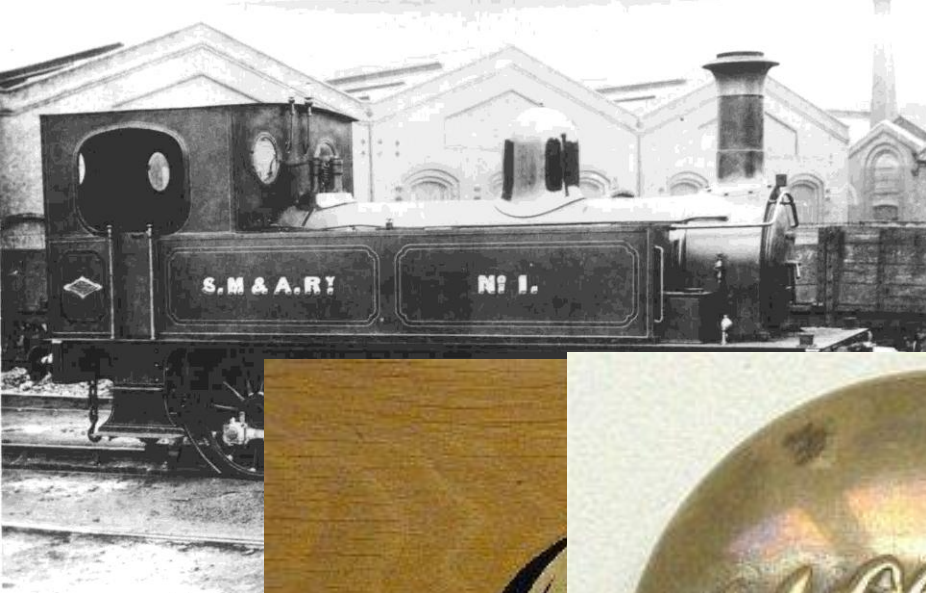
FOR RELEASE
DURING
APRIL 1982
615.00













M&S W.J.B.Y.

405



**BRITISH TRANSPORT
COMMISSION**

British Railways—Western Region

PUBLIC NOTICE

[illegible]

depart 5.0 p.m. on Saturdays. T—Via Kingham.

MIDLAND & SOUTH WESTERN JUNCTION RAILWAY.

	Week Days.														Sundays.			
	a.m.	a.m.	a.m.	a.m.	a.m.	p.m.	p.m.	p.m.	p.m.	p.m.	p.m.	p.m.	p.m.	p.m.	a.m.	p.m.	p.m.	p.m.
Cheltenham (Mid.) dep.	4.50	5.15	...	8.55	10.37	...	1.12	...	3.5	...	5.15	6.57	3.15	...
Andoversford and Dowdeswell	...	5.35	...	9.18	10.54	...	1.31	5.43	7.1	3.34	...
Withington	9.33	1.36	5.39	7.23	3.39	...
Chedworth	...	5.46	...	9.31	11.5	...	1.44	5.47	7.31	3.47	...
Foss Cross	9.35	1.48	5.51	7.35	3.51	...
Cirencester	...	6.7	...	8.15	11.18	...	2.2	6.11	7.59	10.15	...	6.55	...	4.5	...
Cerne and Ashton Keynes	...	6.16	...	8.24	2.9	6.11	7.59	10.22	...	7.3	...	4.14	...
Cricklade	...	6.20	...	8.36	11.31	...	2.17	6.19	8.13	10.30	...	7.15	...	4.23	...
Blunsdon	...	6.40	...	8.44	8.24	7.23	...	4.29	...
Swindon Town	6.25	7.0	...	9.5	11.47	1.15	2.35	3.30	4.20	5.0	6.40	8.45	10.45	11.15	7.52	2.45	4.50	6.0
Chiseldon	...	7.10	...	9.14	...	1.22	2.42	3.35	4.27	5.0	6.47	8.55	11.23	...	8.2	2.52	4.57	6.10
Ogbourne	...	7.19	...	9.23	...	1.32	2.50	3.45	6.56	9.6	11.34	...	8.11	3.0	...	6.20
Marlborough	6.50	7.32	...	9.35	12.8	1.42	3.0	3.55	4.45	...	7.9	9.20	11.45	...	8.22	3.10	5.14	6.32
Savernake	...	7.43	...	9.45	12.18	...	3.10	...	4.56	...	7.20	9.31	11.55	...	8.37	...	5.24	6.43
Grafton and Burbage	...	7.52	...	9.51	3.15	...	5.0	...	7.31	8.44	...	5.34	6.49
Collingbourne	...	8.2	...	10.0	3.24	...	5.8.7	...	7.43	8.54	...	5.45	6.58
Ludgershall	7.12	8.6	...	10.5	12.32	...	3.32	...	5.13	...	7.50	9.46	12.9	...	9.1	...	5.50	7.3
Tidworth	...	8.27	...	10.50	12.47	...	3.44	...	5.26	...	8.6	10.45	12.20	...	9.12	...	6.6	7.37
Weyhill	7.20	10.14	5.21	...	7.59	9.11	7.14
Andover Junction	7.26	8.20	10.20	...	12.43	...	3.45	...	5.25	...	8.5	9.58	9.20	...	6.4	7.29

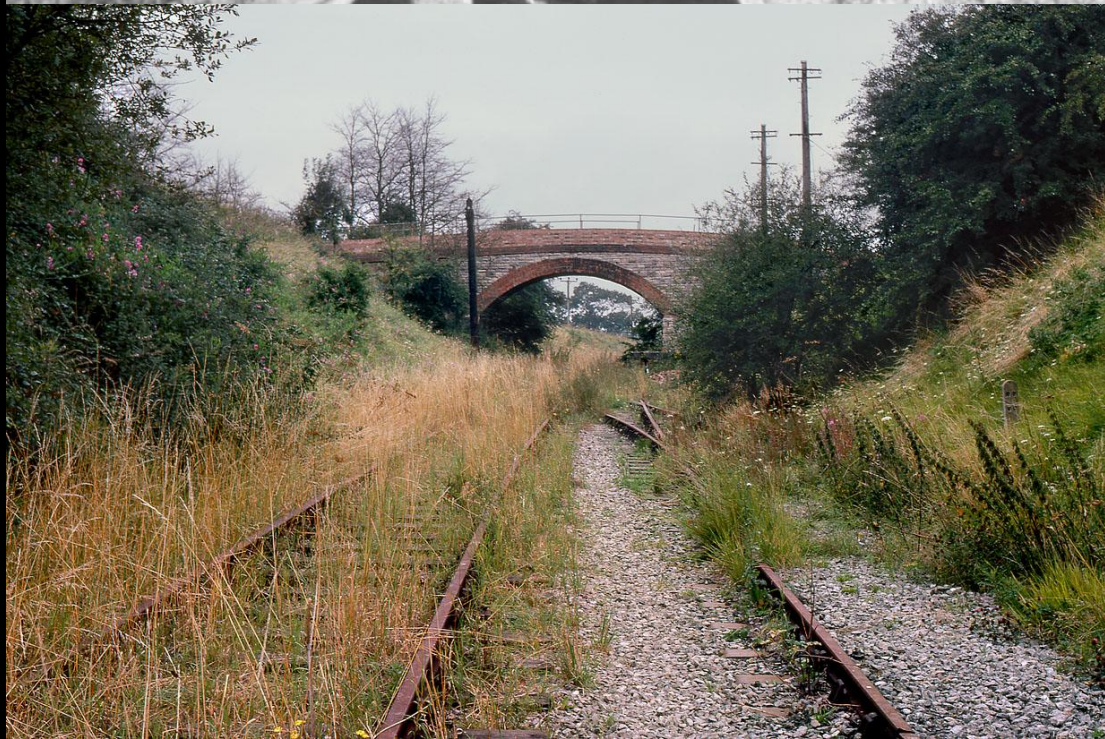
	a.m.	a.m.	a.m.	a.m.	p.m.	p.m.	p.m.	p.m.	p.m.	p.m.	p.m.	p.m.	p.m.	p.m.	a.m.	a.m.	p.m.	p.m.	p.m.
Andover Junction dep.	5.30	...	8.45	11.42	1.10	2.34	5.10	...	7.35	9.53	11.30	...	6.25	8.25
Weyhill	8.52	...	1.18	5.18	...	7.43	11.39	8.33	...
Tidworth	8.47	11.40	1.18	2.30	...	5.0	5.0	...	7.35	9.50	11.35	...	6.25	8.25
Ludgershall	6.0	...	9.0	11.55	1.29	2.45	...	5.15	5.27	...	7.53	10.7	11.47	...	6.38	8.42
Collingbourne	9.6	...	1.35	5.21	5.33	...	7.59	11.59	8.48	...
Grafton and Burbage	9.15	...	1.46	5.30	5.42	...	8.8	12.11	8.57	...
Savernake	6.28	...	9.21	12.10	1.52	5.35	5.47	...	8.15	10.32	12.20	...	6.53	9.3
Marlborough	...	6.48	...	9.34	12.20	2.5	1.50	3.6	4.45	5.49	6.0	8.30	10.34	12.34	3.20	7.4	9.15
Ogbourne	...	7.0	...	9.44	...	2.16	4.56	5.57	6.11	8.41	12.48	3.30	...	9.26
Chiseldon	5.20	7.10	...	9.53	2.26	2.17	...	5.5	6.6	6.22	8.50	8.49	1.0	3.39	7.20	9.37
Swindon Town	5.27	7.22	...	10.3	12.41	2.38	2.17	3.27	5.11	6.14	6.35	9.15	11.0	1.3	3.45	7.30	9.48
Blunsdon	2.49	6.47
Cricklade	...	7.42	...	10.18	...	2.55	6.53	9.31	11.15	7.43	10.2
Cerne and Ashton Keynes	...	7.51	...	10.28	...	3.3	7.1	9.39	10.10
Cirencester	...	8.2	...	10.33	1.5	3.11	...	3.49	7.8	9.45	11.23	8.0	10.18
Foss Cross	...	8.14	...	10.45	...	3.24	7.21	10.30
Chedworth	...	8.18	...	10.49	...	3.28	7.25
Withington	...	8.25	...	10.56	...	3.36	7.33	10.40
Andoversford and Dowdeswell	...	8.30	...	11.1	...	2.41	7.39	8.27
Cheltenham (Mid.)	...	8.45	...	11.15	1.37	4.2	...	4.19	8.2	12.0	8.43	10.56

§—First Monday in each month only, Bank Holidays excepted. ¶—Also calls at Andoversford, G.W.R. G—Calls by signal to pick up Passengers only.

S—Calls on Saturdays only.

The distance between the Great Western and M. & S.W. Jct. Stations at Savernake is about 200 yards, and at Andoversford about $\frac{1}{2}$ of a mile.

The distance between the M. & S.W. Jct. and the Great Western Co.'s Stations at Swindon is about 1 mile.





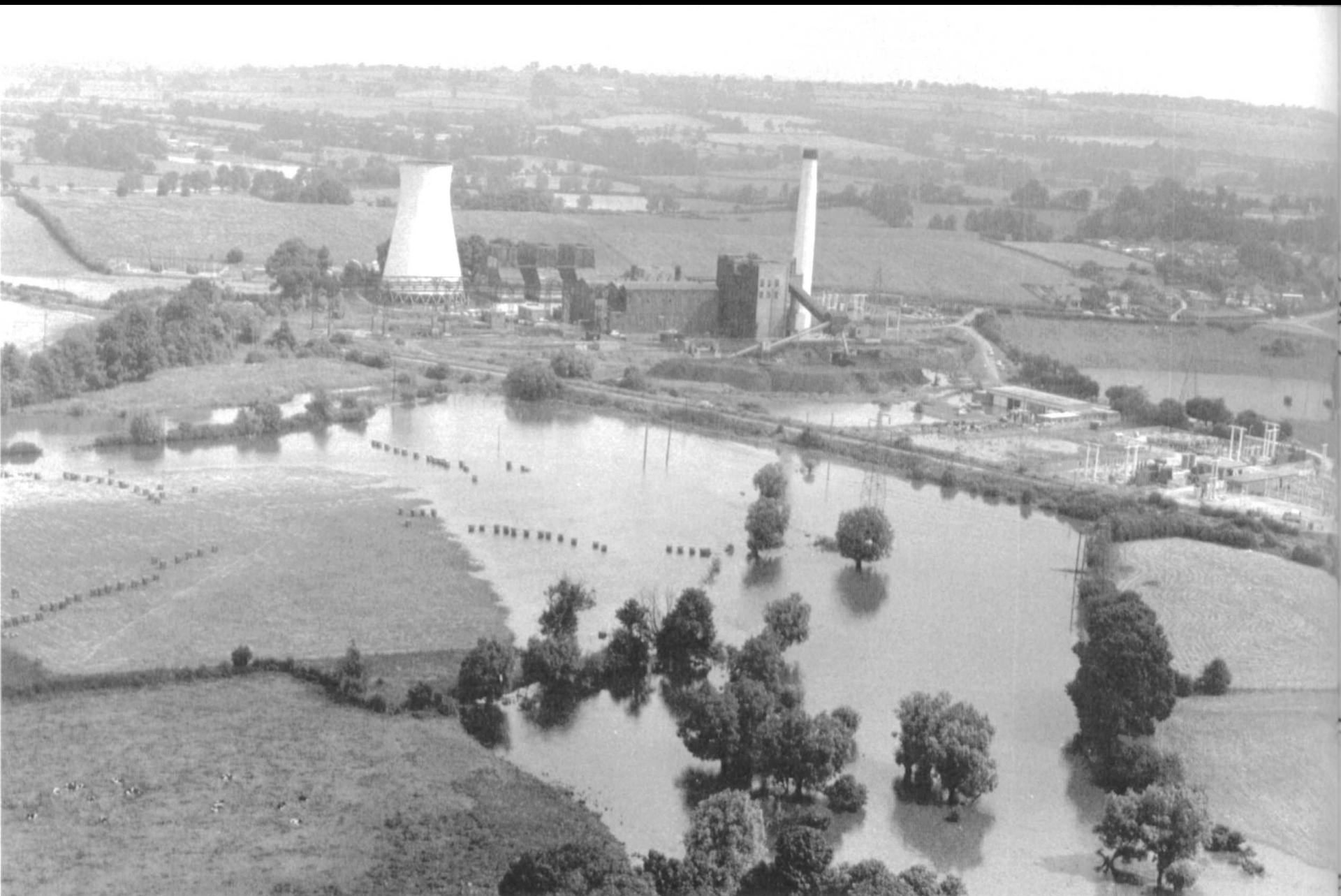










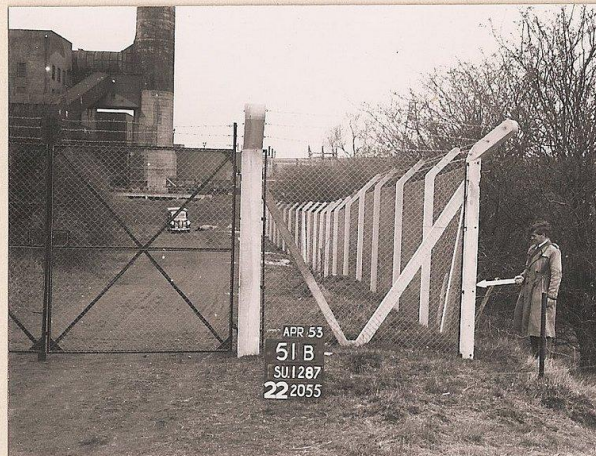




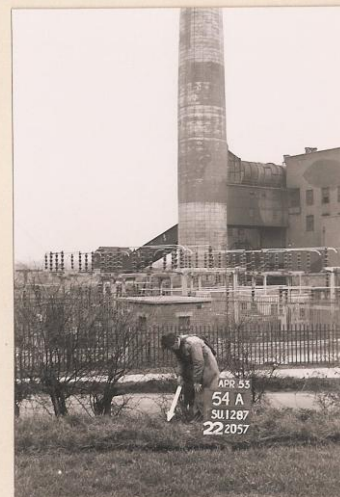


APR 53
12 L
SU 1287
222053

2L. SW corner of bridge pier.



APR 53
51 B
SU 1287
222055



APR 53
54 A
SU 1287
222057

RP. 54A. Pipe Nail in concrete block opposite RP. 54B.



APR 53
34 A
SU 1287
222058

RP. 34A. Corner of gate post at entrance to Works.



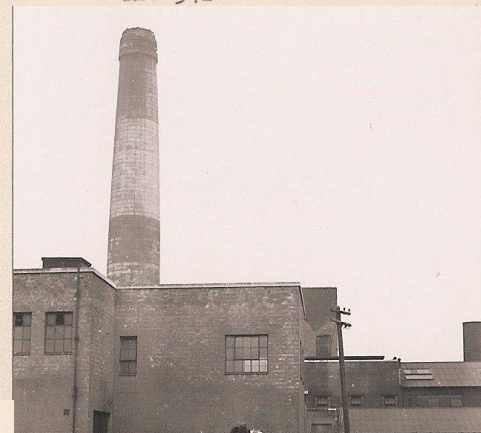
APR 53
12 K
SU 1287
222053

RP. 12K. SE corner of bridge pier.



APR 53
15 K
SU 1287
222051

RP. 15K. Pipe Nail in concrete block near 2nd wooden post.



APR 53
34 B
SU 1287
222058

34B. Corner of iron fence.









**SWINDON
VIEWPOINT**

◀ Back

vimeo

Search 🔍



LIKE



LATER



Demolition of Moredon cooling towers

by **Swindon Viewpoint** PLUS 2 years ago

❤️ 0 🎬 339 💬 0

Super 8 film made by Phil Bowes of the demolition of the cooling towers at Moredon power station **MORE** ▼

[View non-mobile version of this page?](#)

[Log in](#) / [Help](#) / [Terms](#) / [Privacy](#)

TM & © Vimeo 2012





◀ Back

vimeo

Search 🔍



LIKE



LATER



Moredon Power Station Demolition

by Swindon Viewpoint PLUS 2 years ago

❤️ 0 🎬 720 💬 0

Jeannette Duffy introduces a short piece on the demolition of the chimney at Moredon Pow MORE ▼

[View non-mobile version of this page?](#)

[Log in](#) / [Help](#) / [Terms](#) / [Privacy](#)

TM & © Vimeo 2012





























R.P. 02A. Pipe Nail in gate post.



RP. 20B. Pipe Nail in concrete block at



RP. 20K. Centre of metal post at centre of culvert.



RP. 20A. Corner of Bridge House.



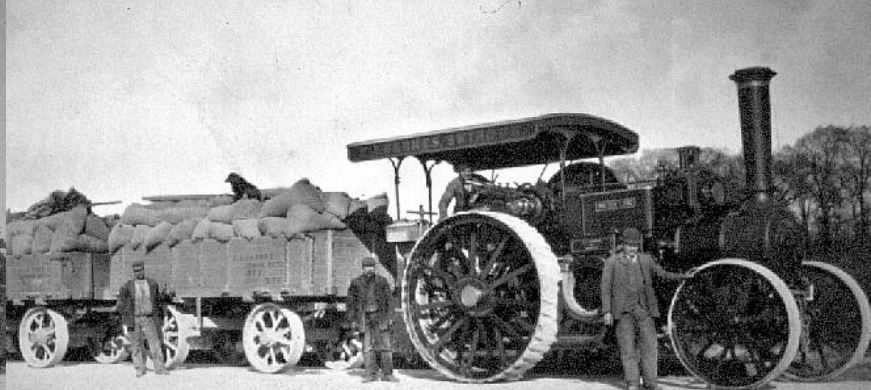
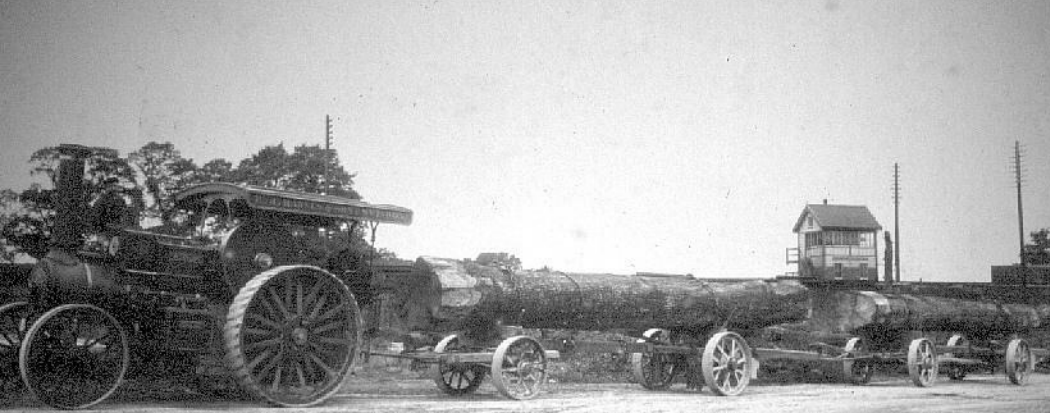












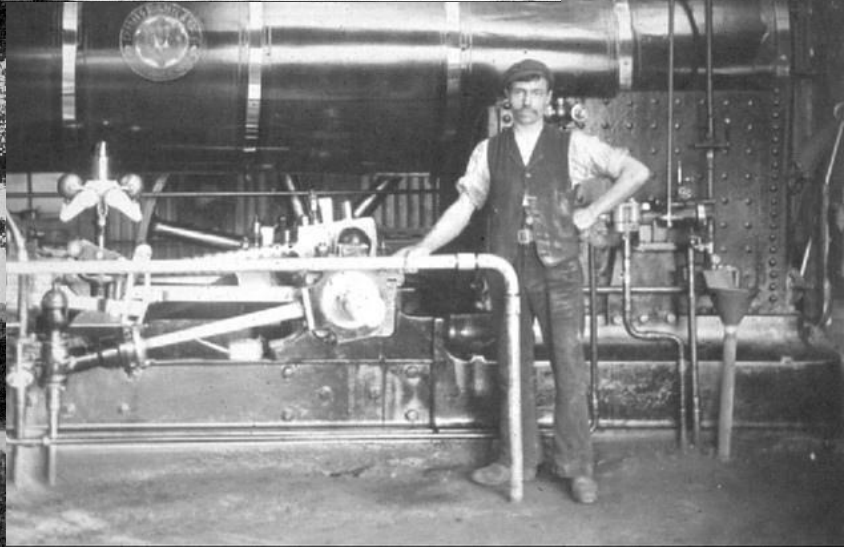
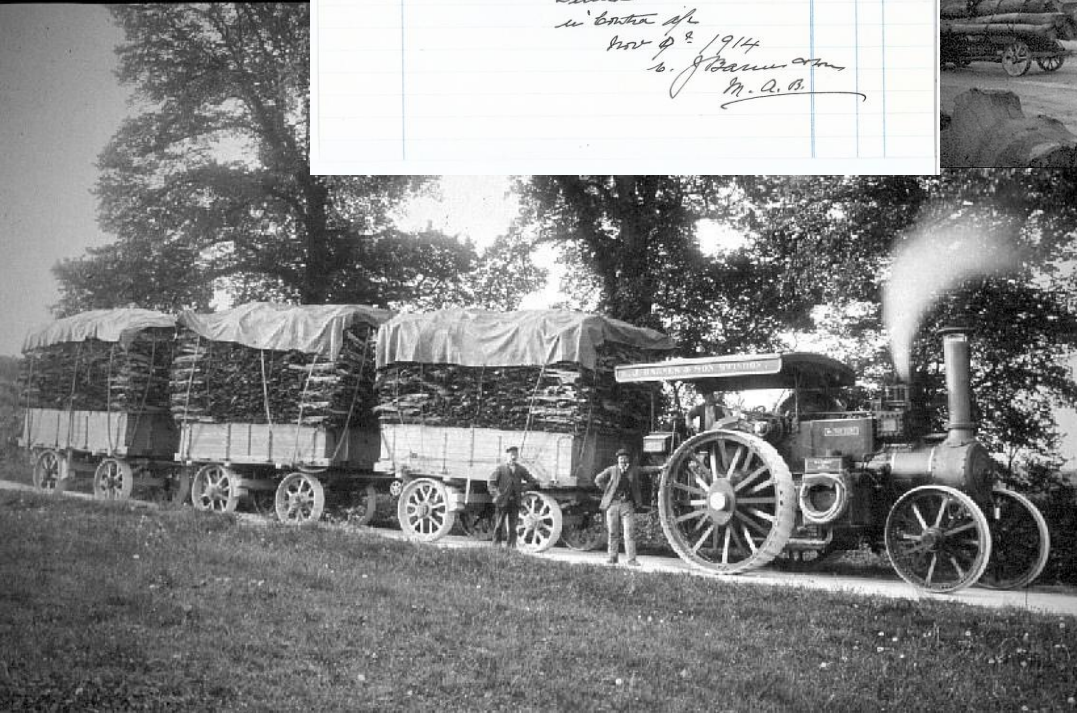
Telegrams: "TIMBER, SWINDON."
MIDLAND SAW MILLS,
 Swindon, Wilts. *Nov* 19*14*

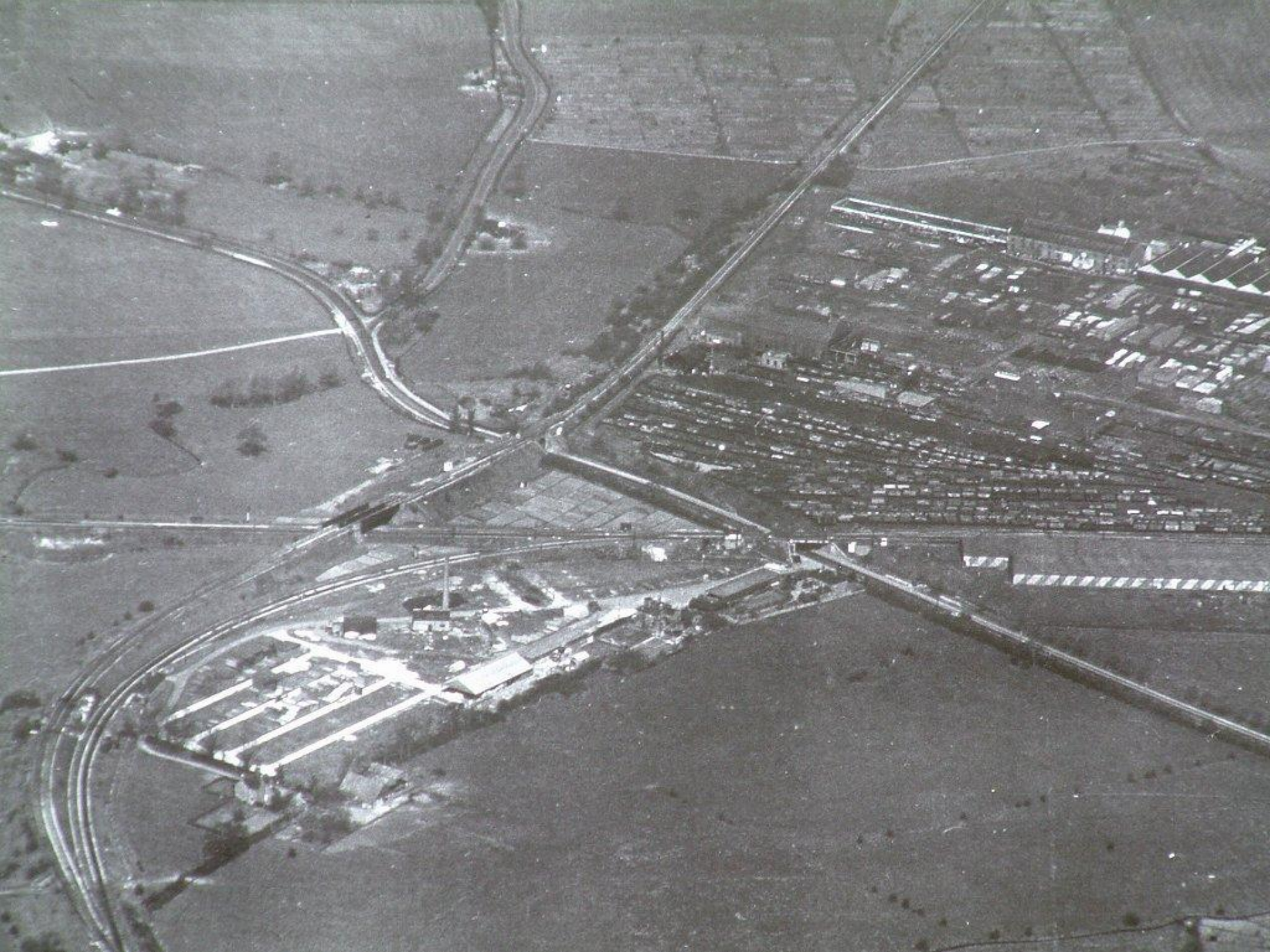
Mr. The Genl. Mgr. Wm. A. S. Patten Swindon

Bought of E. J. Barnes & Sons,
 ENGLISH & FOREIGN TIMBER MERCHANTS,
 COAL MERCHANTS,
 TIN PLATE BOX MANUFACTURERS, TRACTION ENGINE & SAW MILL PROPRIETORS.
 Ladders, Contractors' Barrows, Field Gates, Fencing, &c., made to order.
 INTEREST CHARGED ON OVERDUE ACCOUNTS.

In of Rendred 1.17.11

Little in box of Nov 9th 1914 E. J. Barnes & Sons W. A. S.













CAUTION
PERSONS TRESPASSING UPON THE RAILWAYS BELONGING TO, OR LEASED OR WORKED BY THE LONDON MIDLAND & SCOTTISH RAILWAY COMPANY, OR BY THAT COMPANY AND ANY OTHER COMPANY, AND ANY PERSONS TRESPASSING UPON THE STATIONS CONNECTED WITH SUCH RAILWAYS ARE LIABLE TO A PENALTY OF FORTY SHILLINGS UNDER THE LONDON AND NORTH WESTERN RAILWAY ADDITIONAL POWERS ACT, 1893, AND, IN ACCORDANCE WITH THE PROVISIONS OF THE SAID ACT PUBLIC WARNING IS HEREBY GIVEN TO ALL PERSONS, NOT TO TRESPASS UPON THE SAID RAILWAYS OR STATIONS.
EUSTON STATION LONDON
DECEMBER 1945

SIX TONS
or a Heavy Motor Car or Trailer
The maximum weight for a motor car or trailer is six tons.
TRAILER
or a Heavy Motor Car or Trailer
The maximum weight for a motor car or trailer is six tons.
TEN TONS
or a Heavy Motor Car or Trailer
The maximum weight for a motor car or trailer is ten tons.

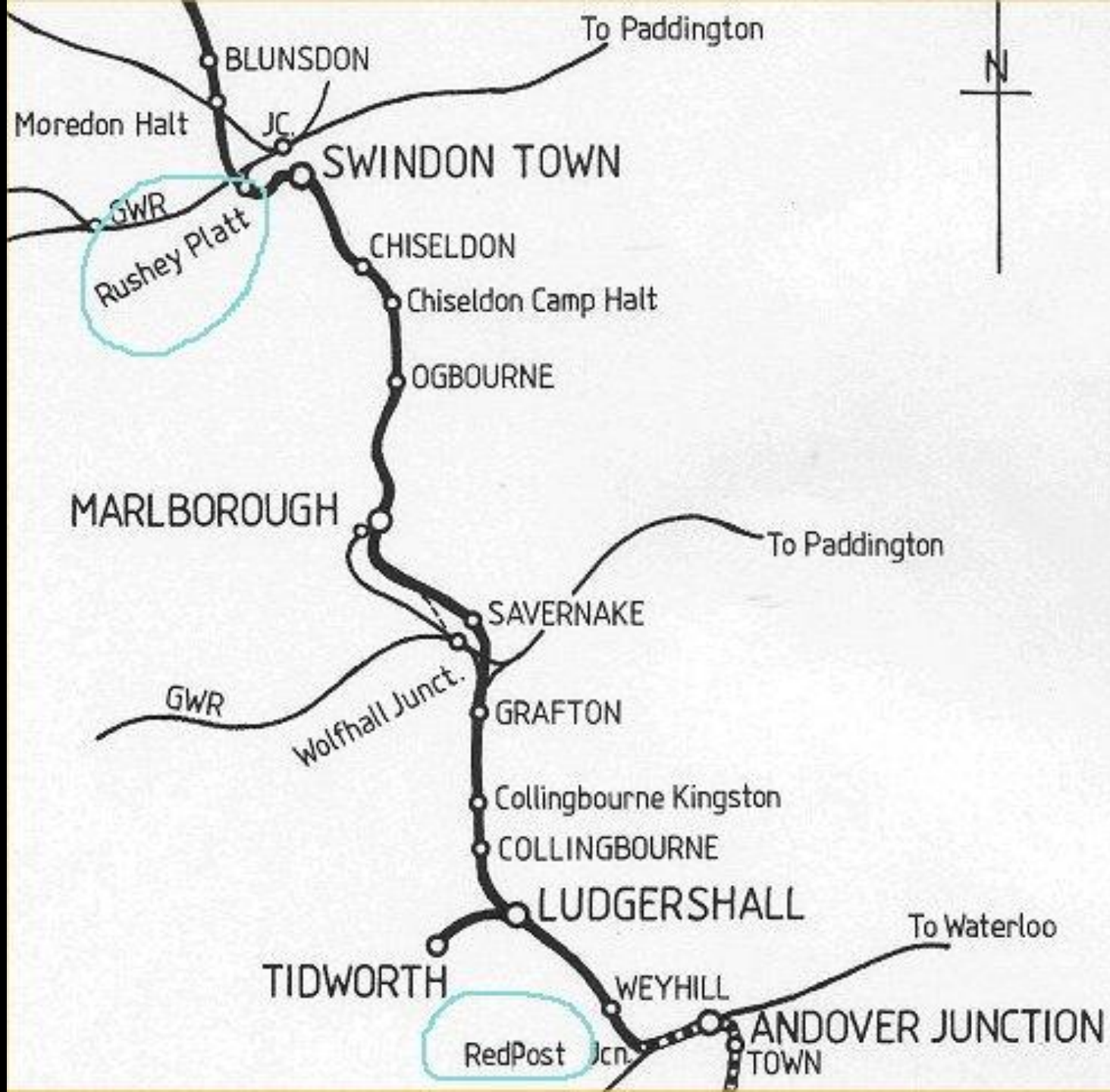
RUSHEY PLATT JUNCTION SIGNAL BOX

BLOCK



















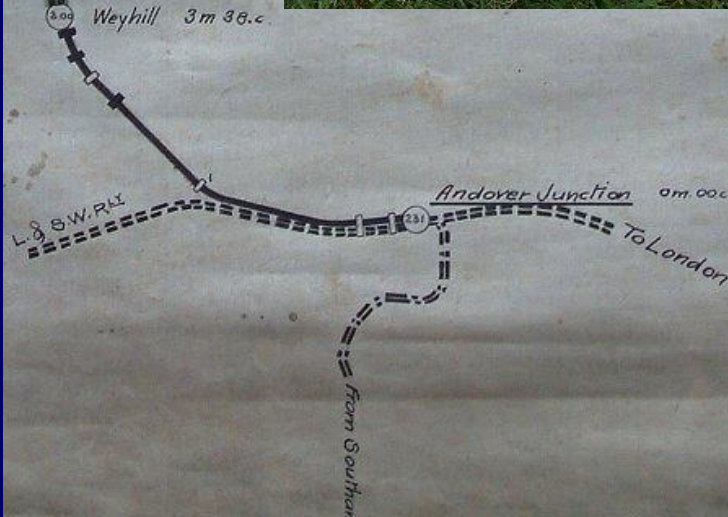
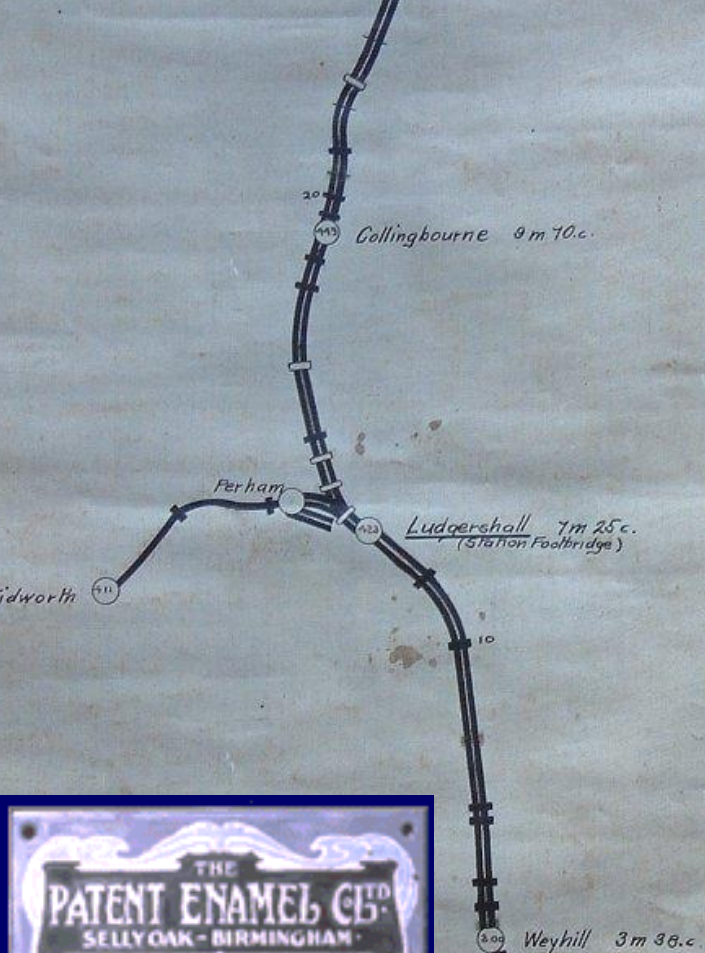
















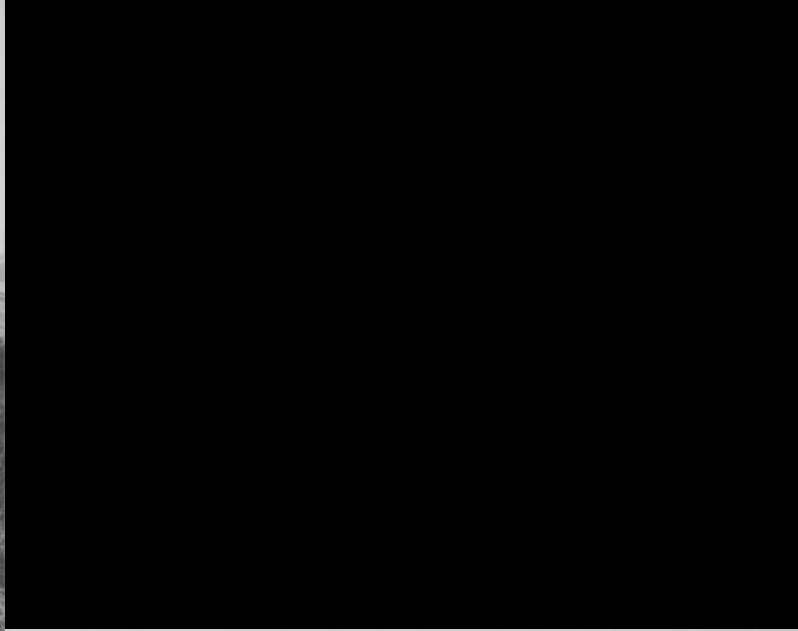












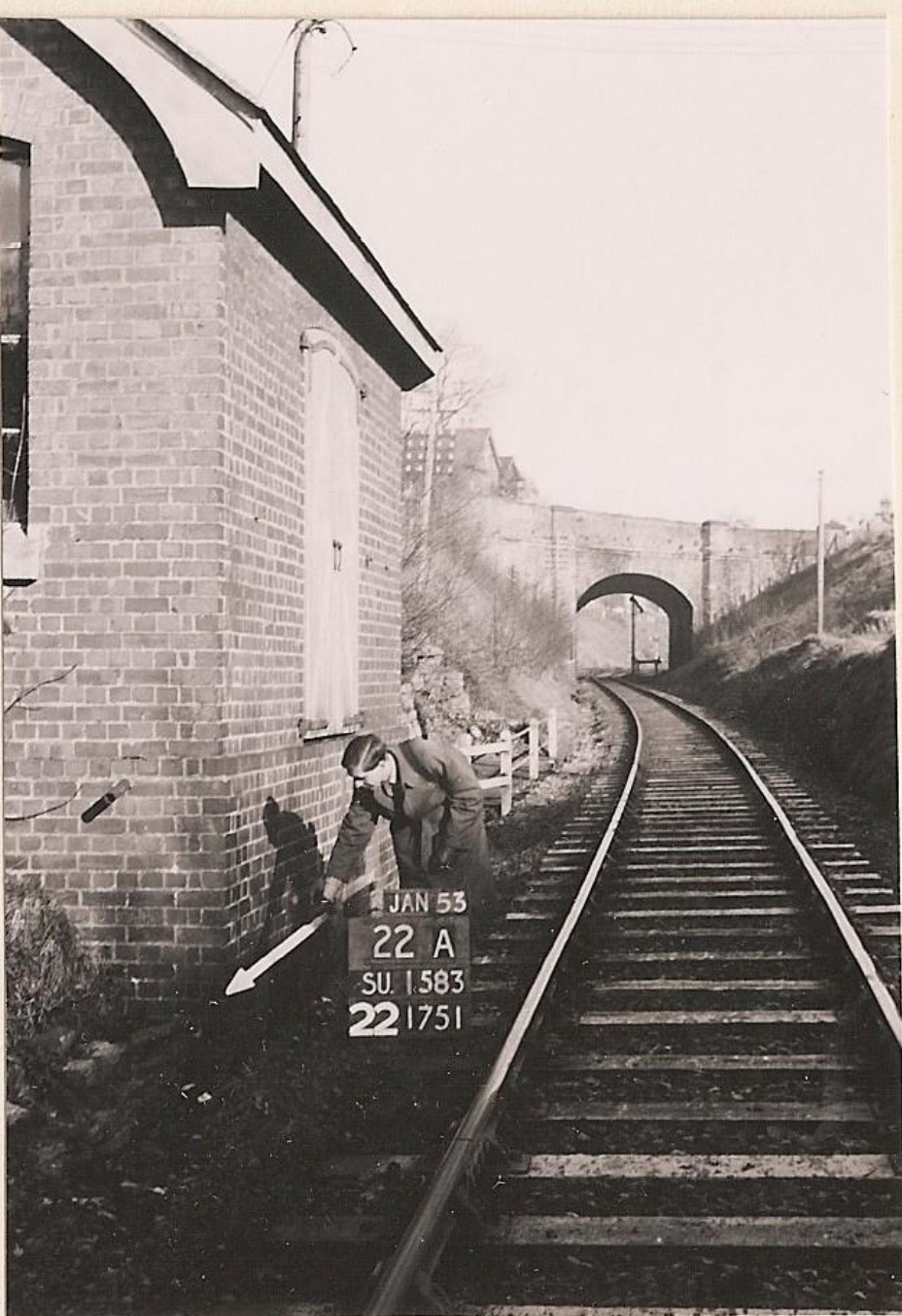


JAN 53
10 B
SU 1583
22 1752







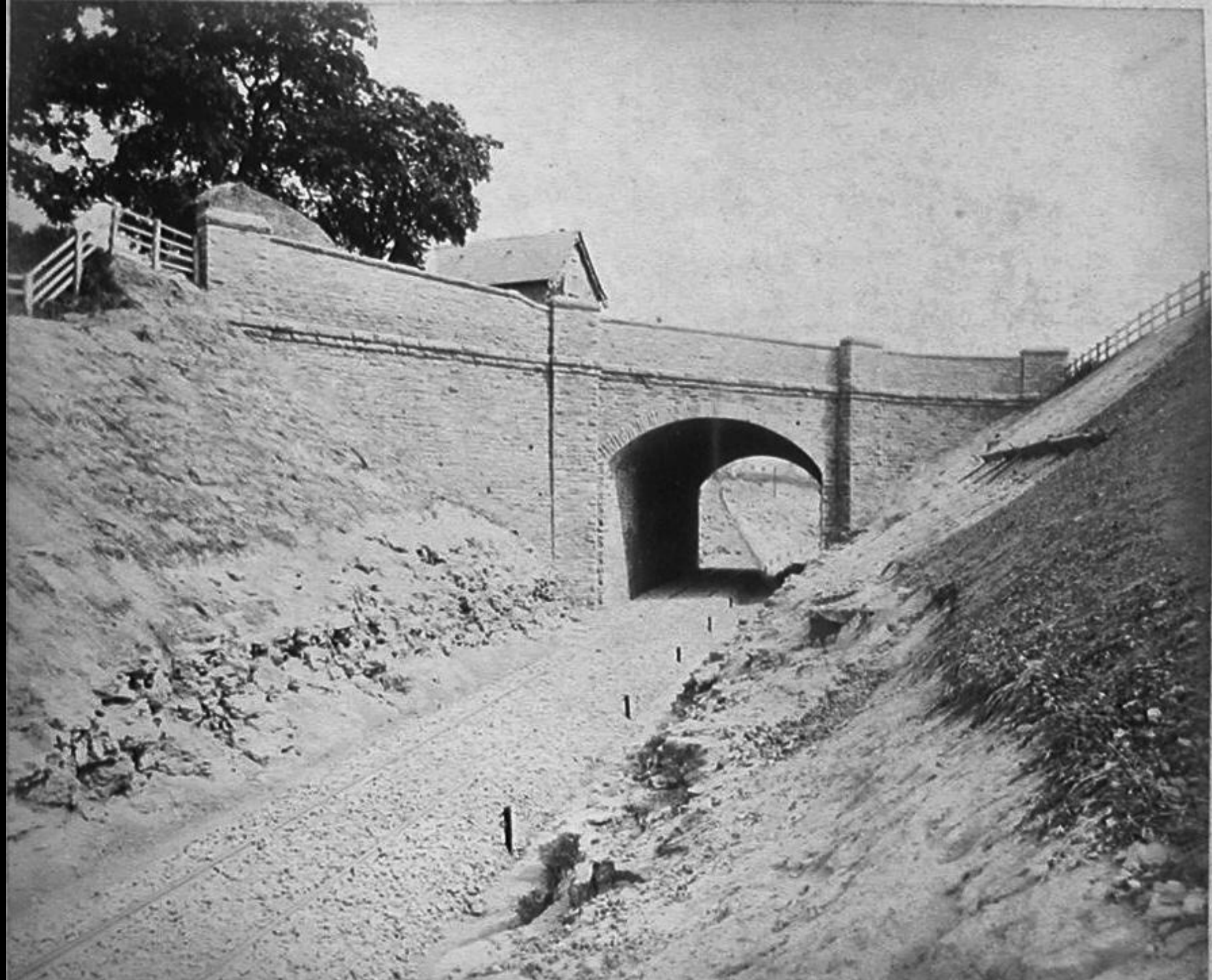


P. 22A. Corner of Pump House.



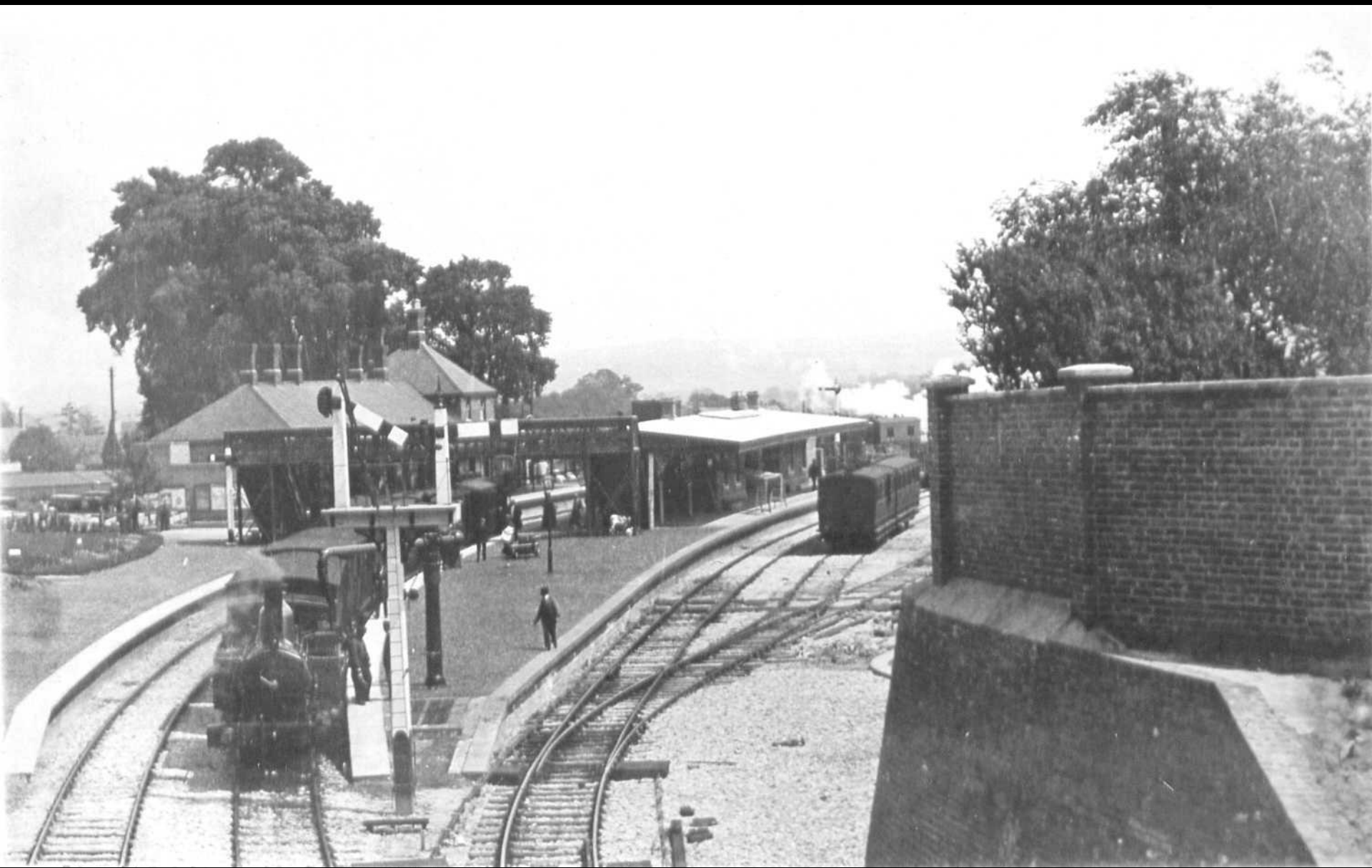
P. 21A. NW. Corner of concrete post in f





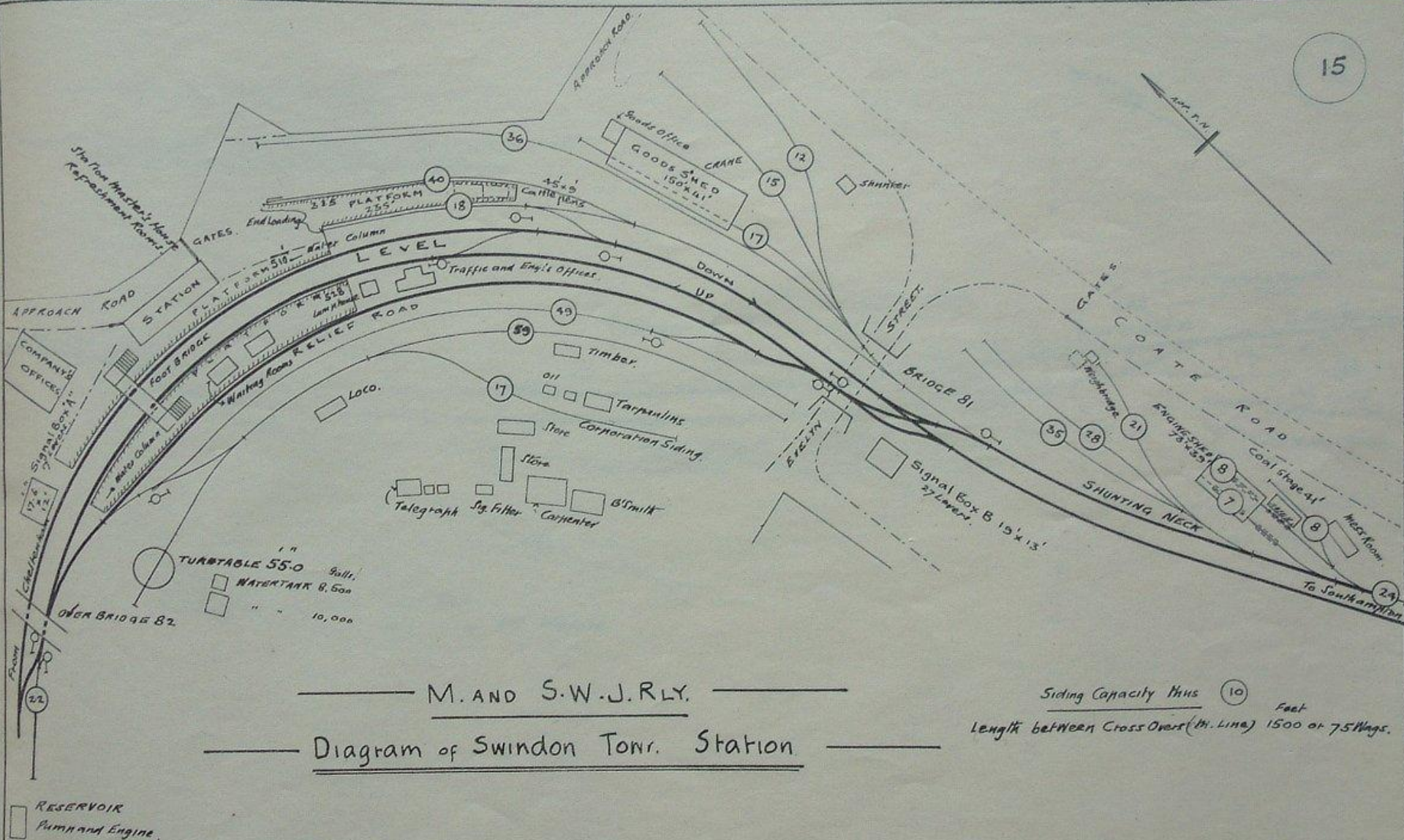






















REFRESHMENT ROOMS, SWINDON TOWN STATION.

TARIFF.

Luncheon Basket	-	-	3	0
Ten Basket	-	-	1	0
Pot Tea	-	-	0	6
*Cup Tea	-	-	0	3
*Cup Coffee	-	-	0	3
Cup Oxo	-	-	0	4
Cakes	-	-	0	2
Packets of Biscuits	-	-	0	2
Chocolates		Usual Prices		
Sandwiches	-	-	0	3
Pork Pies	-	-	0	5
Glass—Port	-	-	0	9
Sherry	-	-	0	9
Whiskey	-	-	0	9
Brandy	-	-	1	0
Rum	-	-	0	9
Gin	-	-	0	9
Bass	-	-	0	8
Worthington	-	-	0	8
Guinness	-	-	0	8
Bitter	-	-	0	4
Cider (per bottle)	-	-	0	8
Minerals	-	-	0	4

* id, if taken on Train.

C. D. GODWIN.















1466
 Gt Western Ry Swindon Jn TO SWINDON TOWN via Rushey Platt L'p Line THIRD CLASS 4th Fare 4th
 Issued subject to the conditions & regulations set out in the Company's Time Tables Bills & Notices
 Swindon Town Swindon Town
 1466

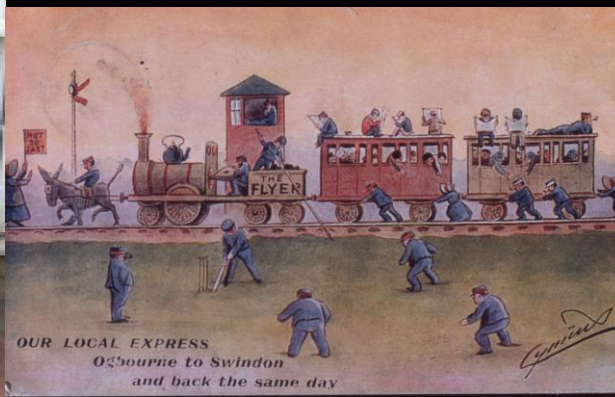


8147
 M. T. W. Th. F. S.
 Midland & South Western Junc. Ry. Co
 WORKMAN'S WEEKLY TICKET
 NOT TRANSFERABLE
 SWINDON TOWN to CHISELDON & BACK
 (M. & S. W. J. Ry.)
 THIRD CLASS 1/6
 Available for one week from date hereon
 NOTICE.- This ticket is issued subject to the conditions on back. S.2

2nd - SINGLE SINGLE - 2nd
 Swindon Town to
 Swindon Town Swindon Town
 Chiseldon Chiseldon
CHISELDON
 (W) 8d. 8d. (W)
 For conditions see o r conditions see ovr



52005
 2nd-SINGLE SINGLE-2
 Cheltenham Spa Malvern Ro
 Cheltenham Spa M. Rd Cheltenham Spa
 Andover Jn Andov
ANDOVER JN
 via Chedworth
 (W) 11/6 FARE 11/6
 For conditions see over for conditions





CHANGE HERE FOR
SWINDON JUNCTION BATH
BRISTOL AND SOUTH WALES
DIDCOT OXFORD READING
AND PADDINGTON















SWINDON TOWN









Helen's World
Chartered Accountants



























JAN 53

80 B

SU. 1583

22 1739





PANEL
1
RADIO
PANEL
2
OFF-BOARD

KE ME



Restricted Zone
ENDS

Directional signs:
M10
M11
M12
M13
M14
M15
M16
M17
M18
M19
M20
M21
M22
M23
M24
M25
M26
M27
M28
M29
M30
M31
M32
M33
M34
M35
M36
M37
M38
M39
M40
M41
M42
M43
M44
M45
M46
M47
M48
M49
M50
M51
M52
M53
M54
M55
M56
M57
M58
M59
M60
M61
M62
M63
M64
M65
M66
M67
M68
M69
M70
M71
M72
M73
M74
M75
M76
M77
M78
M79
M80
M81
M82
M83
M84
M85
M86
M87
M88
M89
M90
M91
M92
M93
M94
M95
M96
M97
M98
M99
M100

Restricted Zone
ENDS











RP. 09K. South corner of Petroleum Spirit Store.



RP. 09B. Corner of wall at entrance to Petroleum Spirit Store.



RP. 09L. Centre of concrete fence post approx. 5.0m. SE. of straight of Spirit Store.



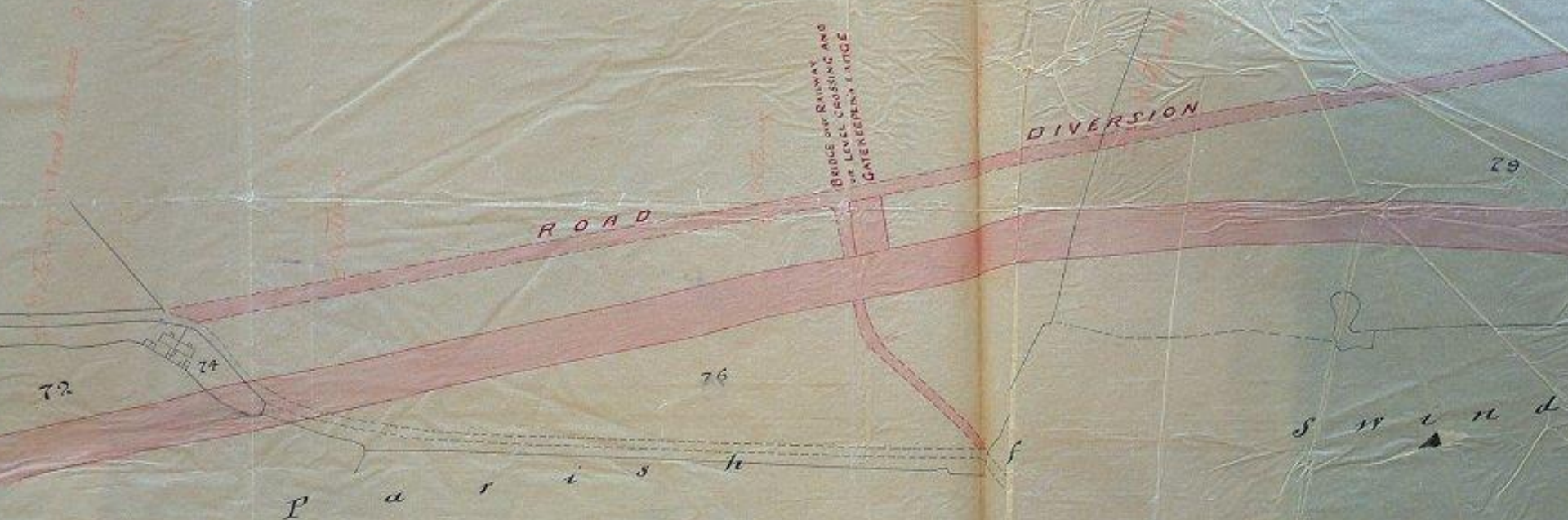
27A. Centre of fence post on straight of path leading to main road.



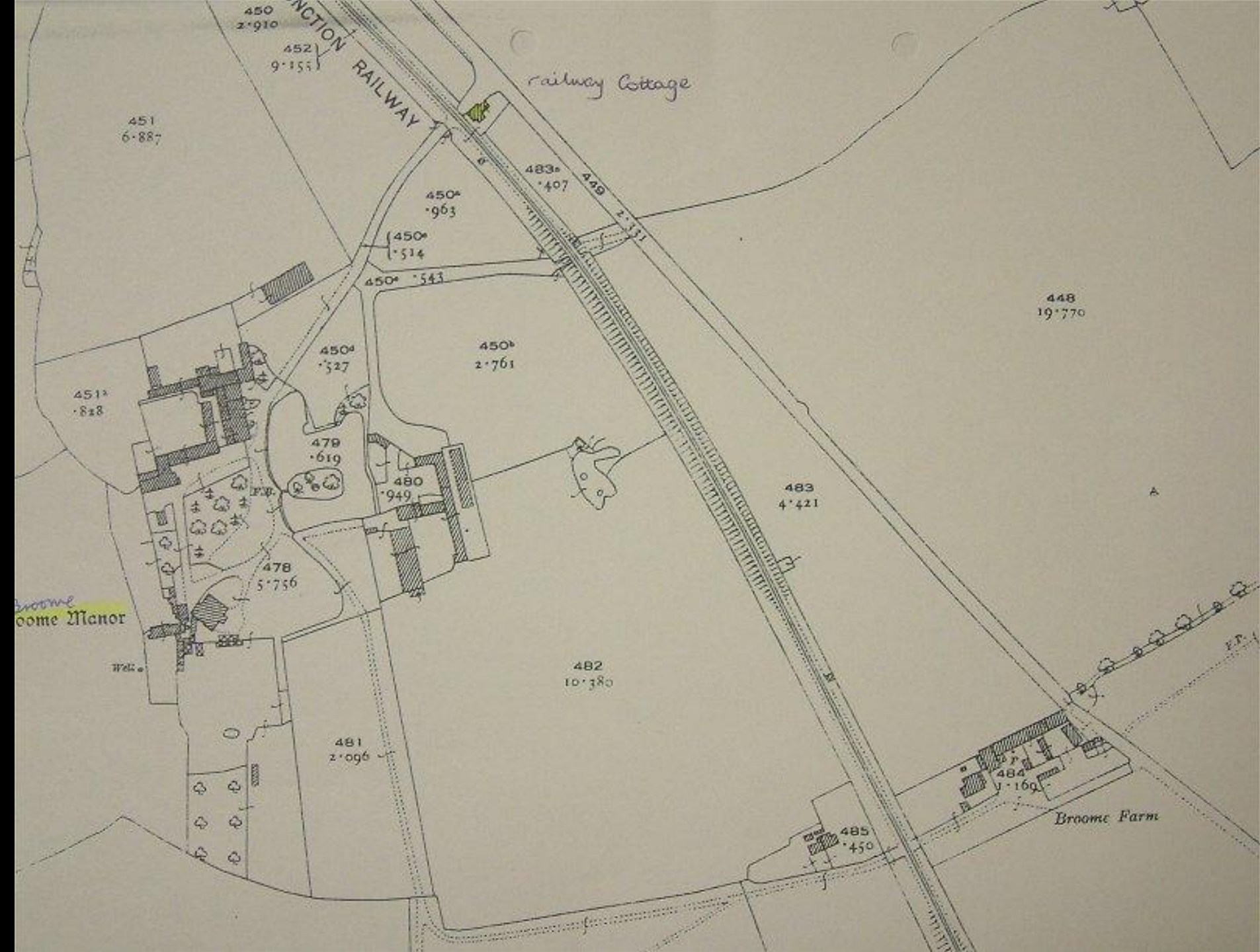
RP. 36K. Centre of Signal Post.

SWINDON MARLBOROUGH & ANDOVER RAILWAY

Boome Farm.











817
KIDDERLEY
PROPERTY DEVELOPMENT
SPECIALISTS
01223 310000
www.kidderley.co.uk



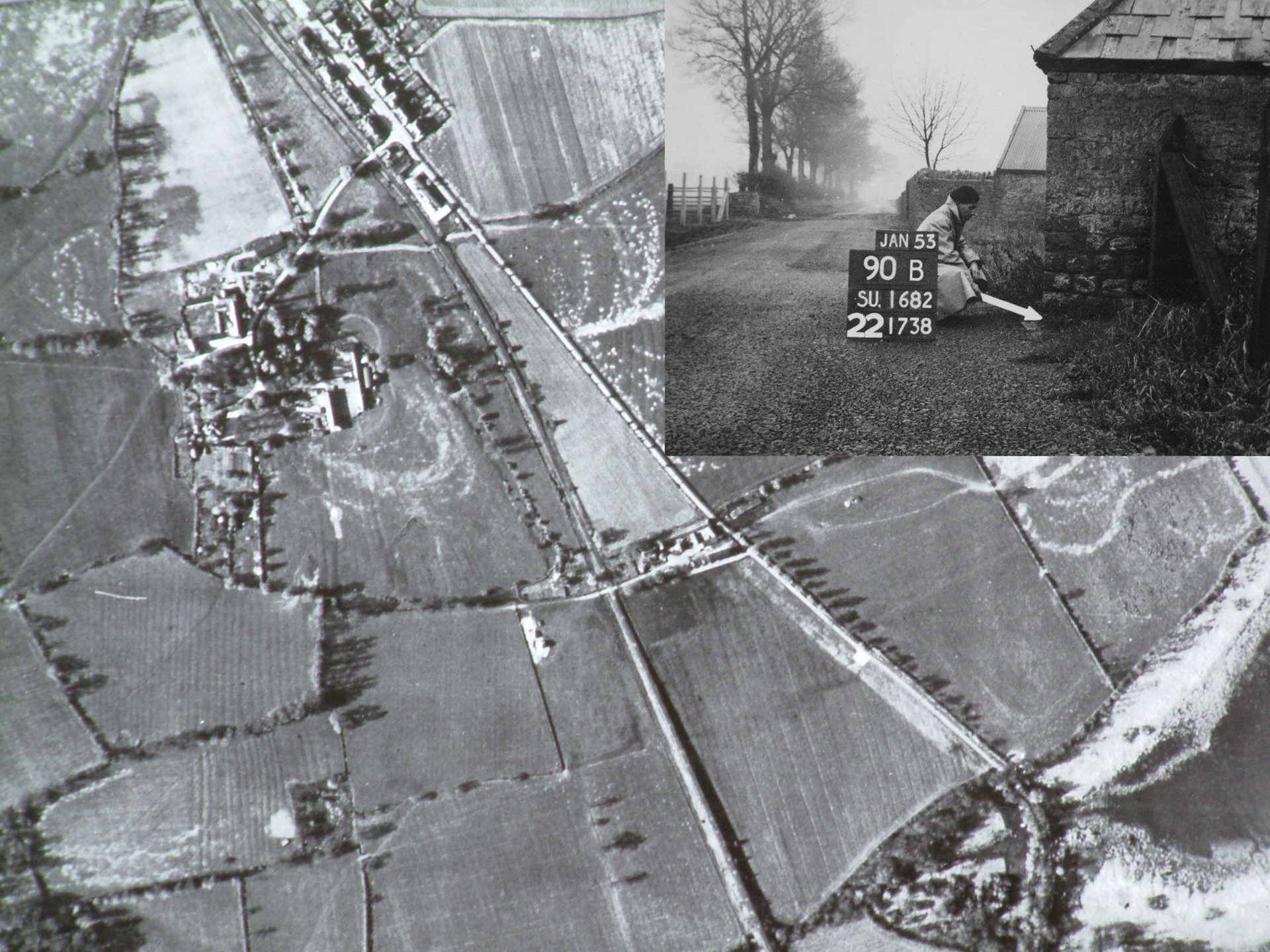
JAN 53
64 B
SU. 1682
221737











JAN 53
90 B
SU. 1682
22 1738

GERMAN SHIP SCUTTLED IN PACIFIC

OFF WEST COAST OF AUSTRALIA?

of Crew Captured: Japs Lose Destroyers

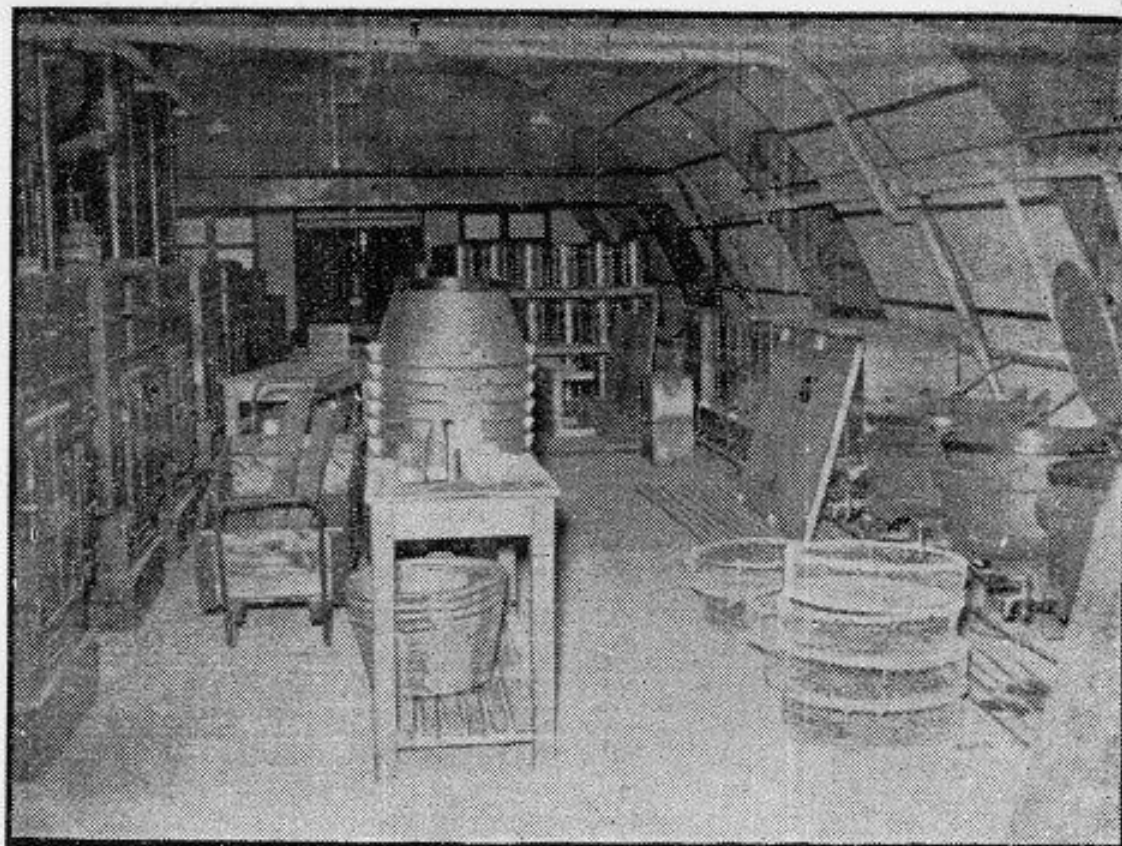
GERMAN auxiliary ship of 8,000 tons was scuttled by her crew when intercepted and hit by gunfire in the Pacific by allied naval forces. Seventy-eight Germans and crew were captured.

Curtis Hindson, Reuter's special correspondent, cables that it is believed that the German auxiliary was intercepted off the West coast of Australia.

Jap destroyers, part of force observed yesterday to manoeuvring off New Guinea, were set on fire by allied forces, and are believed to have sunk.

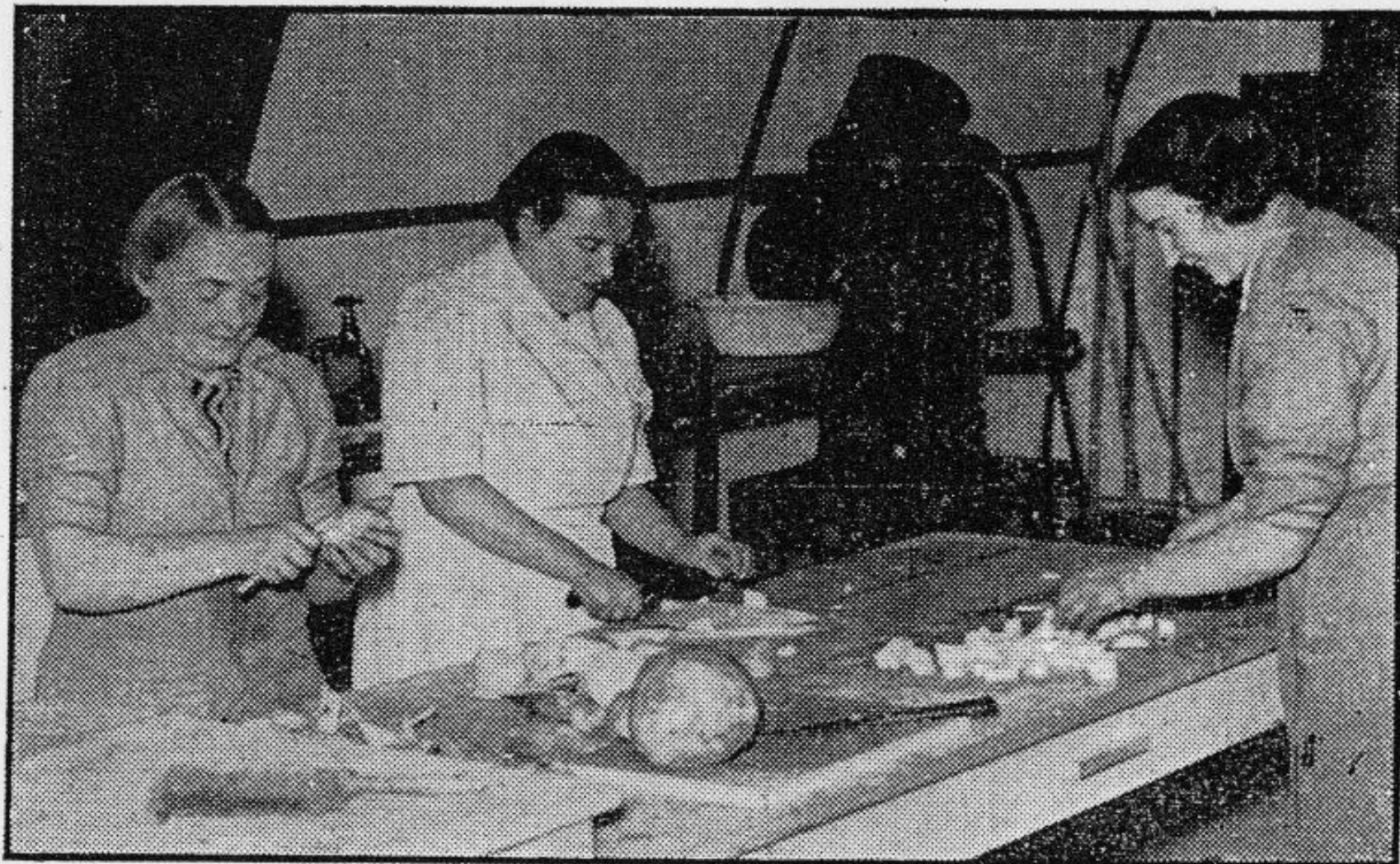
at dusk and dawn, machine-gunning and bombing from a low altitude in face of heavy A.A. fire. Five enemy fighters in the dispersal have

HOT DINNERS FOR SCHOOLCHILDREN



Swindon Corporation cooking depot in Broome Manor-lane, which started to-day to provide 700 hot dinners at fivepence each to scholars in 17 schools in widely scattered areas. The meals are carried in insulated containers. An interior view of the kitchens in Broome Manor-lane.—E.A.

PREPARING DINNER



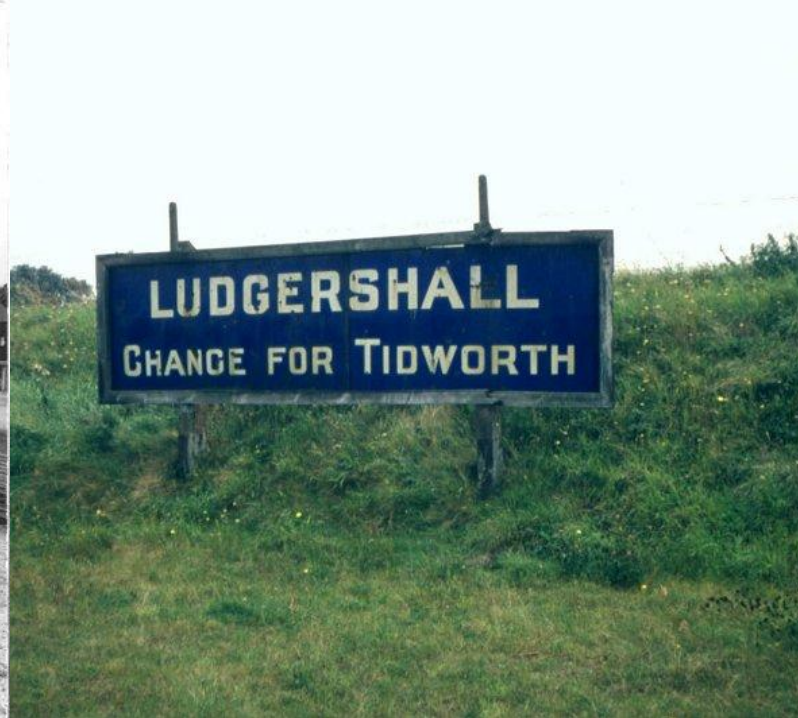
Preparations for meals served to-day for schoolchildren from the Broome Manor-lane, Swindon, kitchens.—E.A.







LUDGER SHALL
CHANGE FOR TIDWORTH








- "3519". A lovely honest little clock in working order.
- 358 **BR(W) double royal Poster** advertising a seaside excursion to Weymouth from Savernake Low Level and Somerset stations on August 9th. (1952). v.g.c. with no folds.
- 359* **"Midland and South Western Junction Railway" cast iron Signal Box Stair Nosing / Noticeboard Header.** A good welded break between 'N&J'. Face restored only. 27in. long.
- 360* **M & SWJR Items:** An ivory signal instrument plate "Weyhill"; wooden handled rubber ink stamp "Grafton & Burbage"; 25mm. brass script initials uniform button. All very good condition. (3).
- 361* **"M & SWJR East & West Connections" fully titled coloured Diagram** showing the company route and those of connecting companies. An early diagram in v.g.c and in a glazed frame. 31.5x23.6in. overall.
- 362* **M & SWJR 3 aspect Handlamp.** Shield shaped brass plate to body "P.W.D. M & SWJR 33". Top handle also stamped "33". Complete with BR vessel, burner, reflector and all glasses. Original green paint and in v.g.c. Rare.
- 363* **M&SWJR original two piece enamel Station Running In Board "Ludgershall Change For Tidworth".** Much chipping but worthy of restoration. 90.25x43.25in. and 78x43.25in. Successful bidder to remove from a wall and collect from the Melksham area.
- 364* **GWR enamel Station Lamp Sign "Ludgershall"** with flange to top edge. Small chips to top corners otherwise lovely condition with fine deep colour and shine. 36in. long.



SEASIDE EXCURSION



SUNDAY, AUGUST 9TH
TO
WEYMOUTH

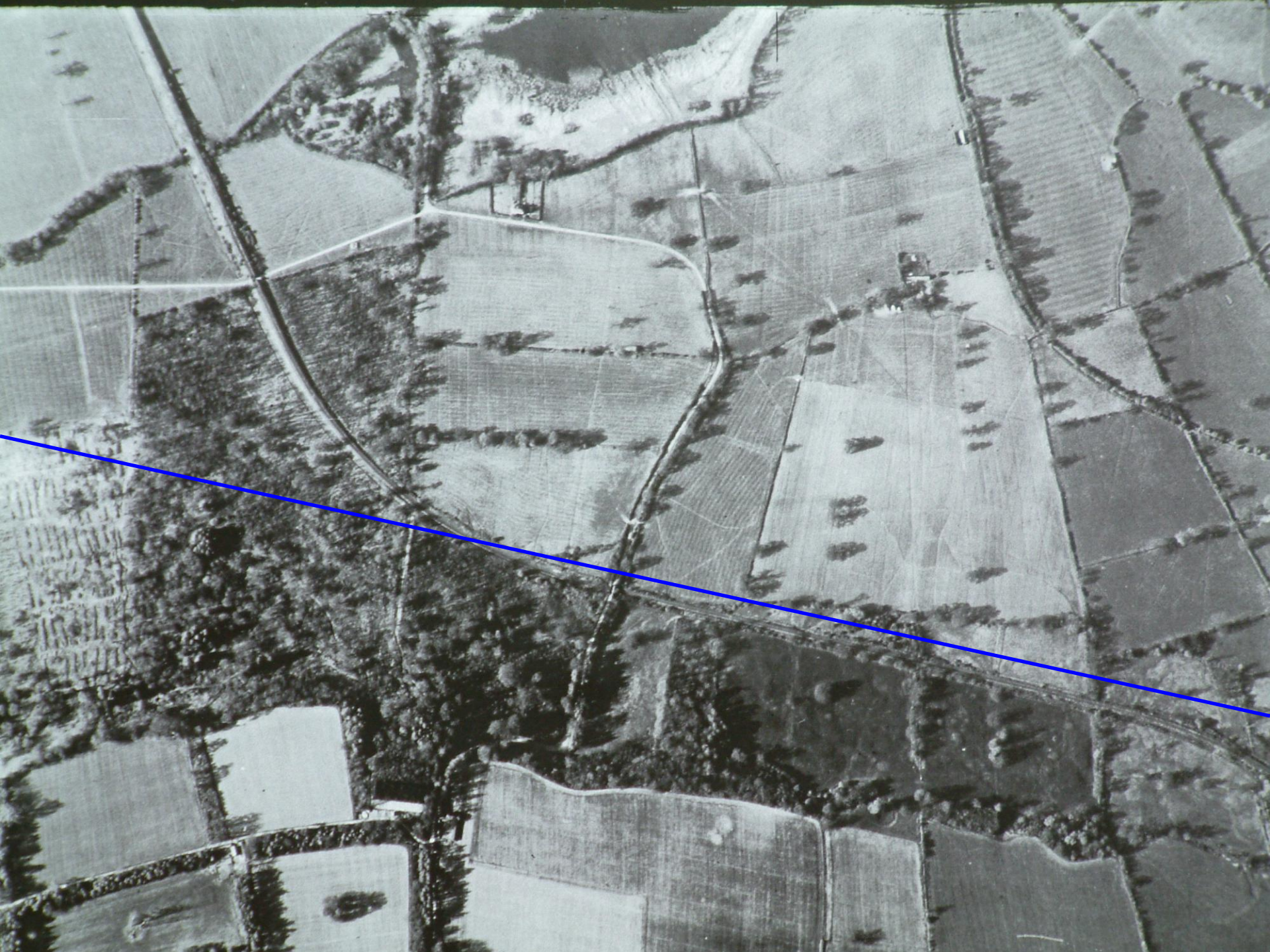
FROM	FARE	DEPART
SAVERNAKE L.L.	12/-	9.45 a.m.
WOOTTON RIVERS HALT	11/9	9.50 ..
PEWSEY	11/3	9.55 ..
MANNINGFORD HALT	10/6	10.0 ..
WOODBOROUGH	10/5	10.5 ..
PATNEY & CHIRTON	10/3	10.10 ..
DEVIZES	9/9	10.20 ..
SEEND	9/3	10.30 ..
HOLT JUNCTION		10.35 ..

Ask for handbill giving full details

WESTERN RAILWAY









Beginning of a Motorway ..





The changing scene at Hodson Wood, once a well-known beauty spot, showing the bridge over the old railway between Chiseldon and Swindon on the right, the new bridge supports on the left, and in the foreground the area where many trees have been felled to make room for the M4.







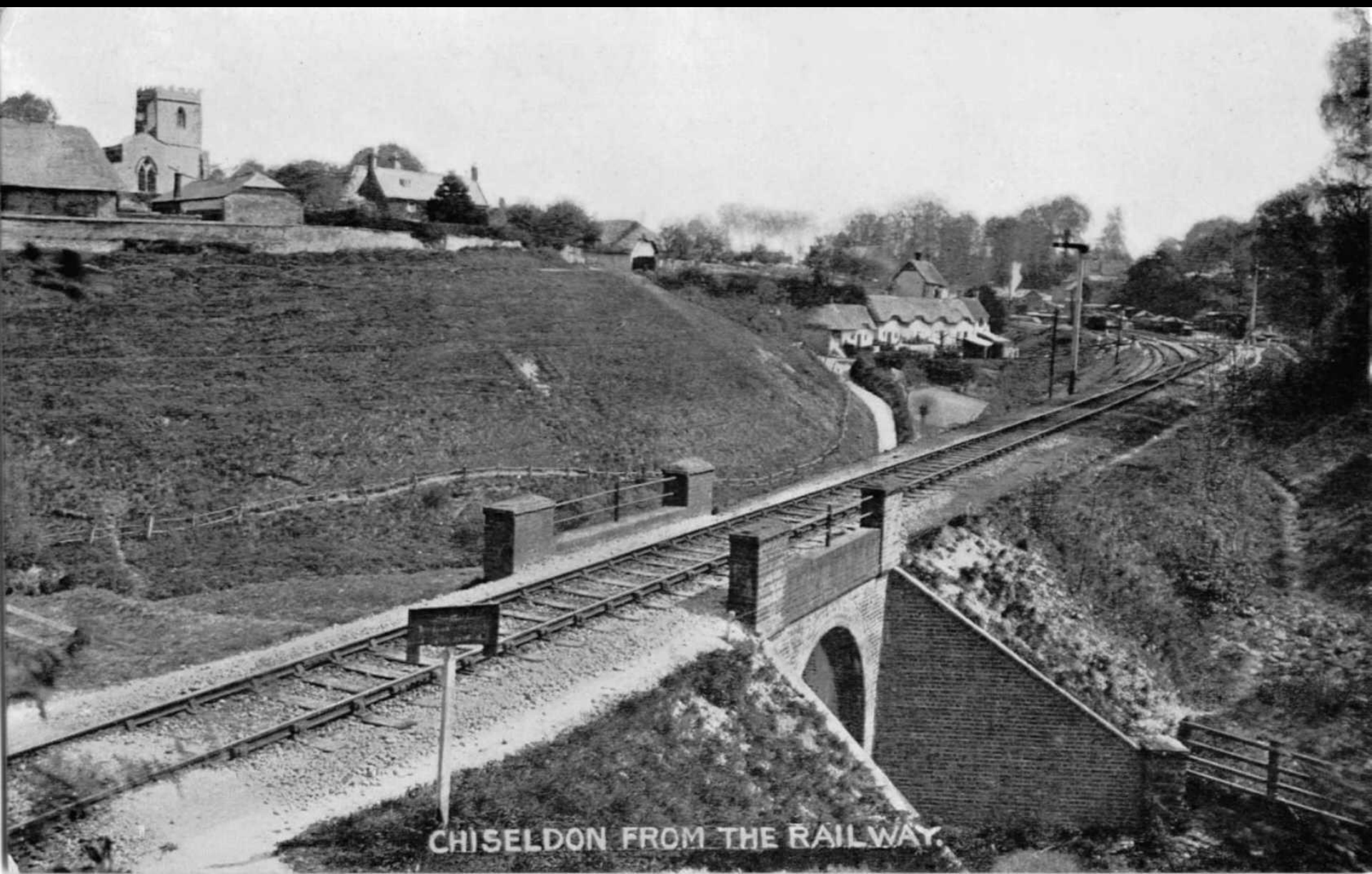


№1 TEE, GOLF LINKS CHISELDON.







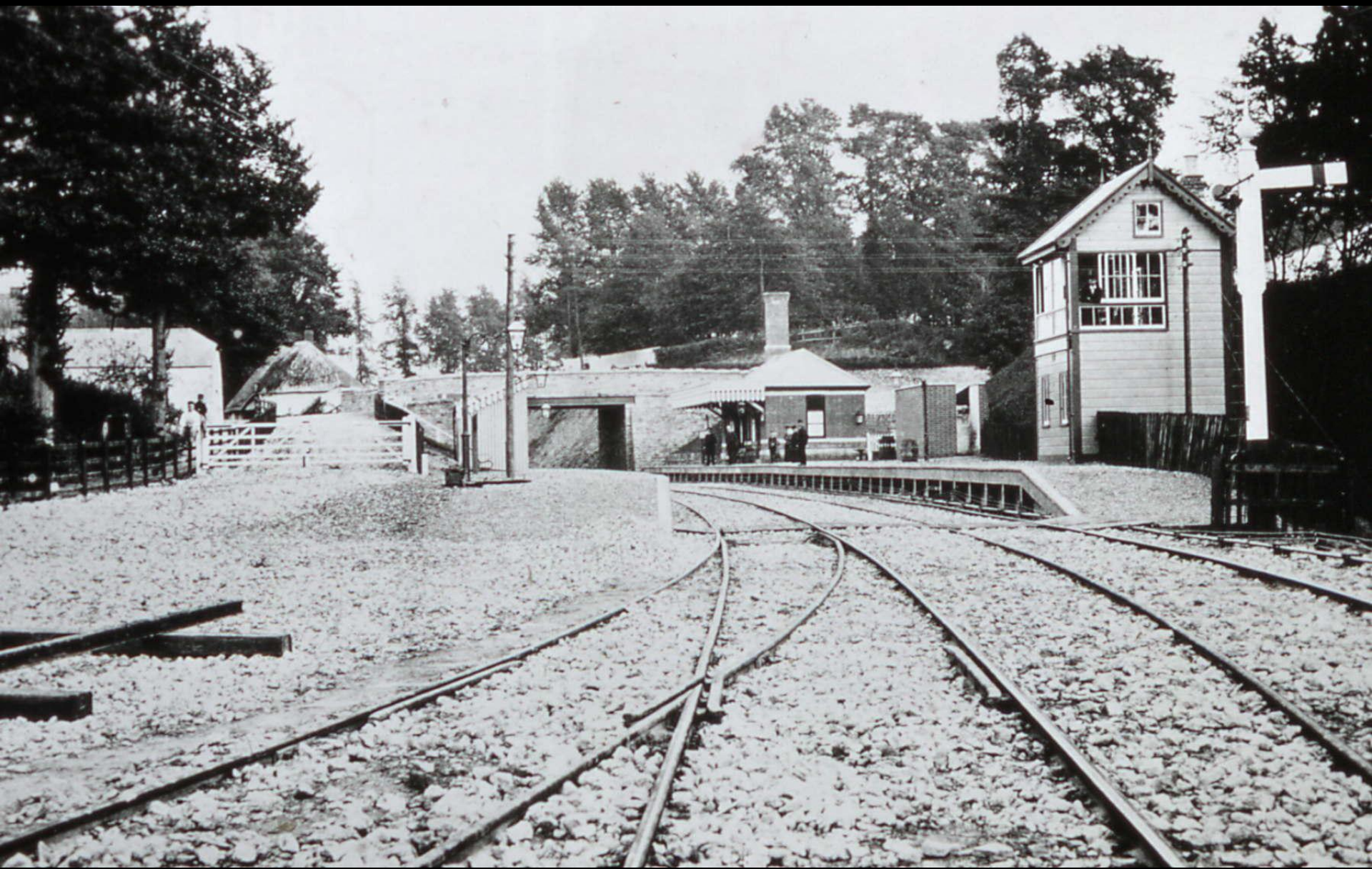


CHISELDON FROM THE RAILWAY.



CHISELDON
HOOPER - Photo.















CHISELDON WINDMILL

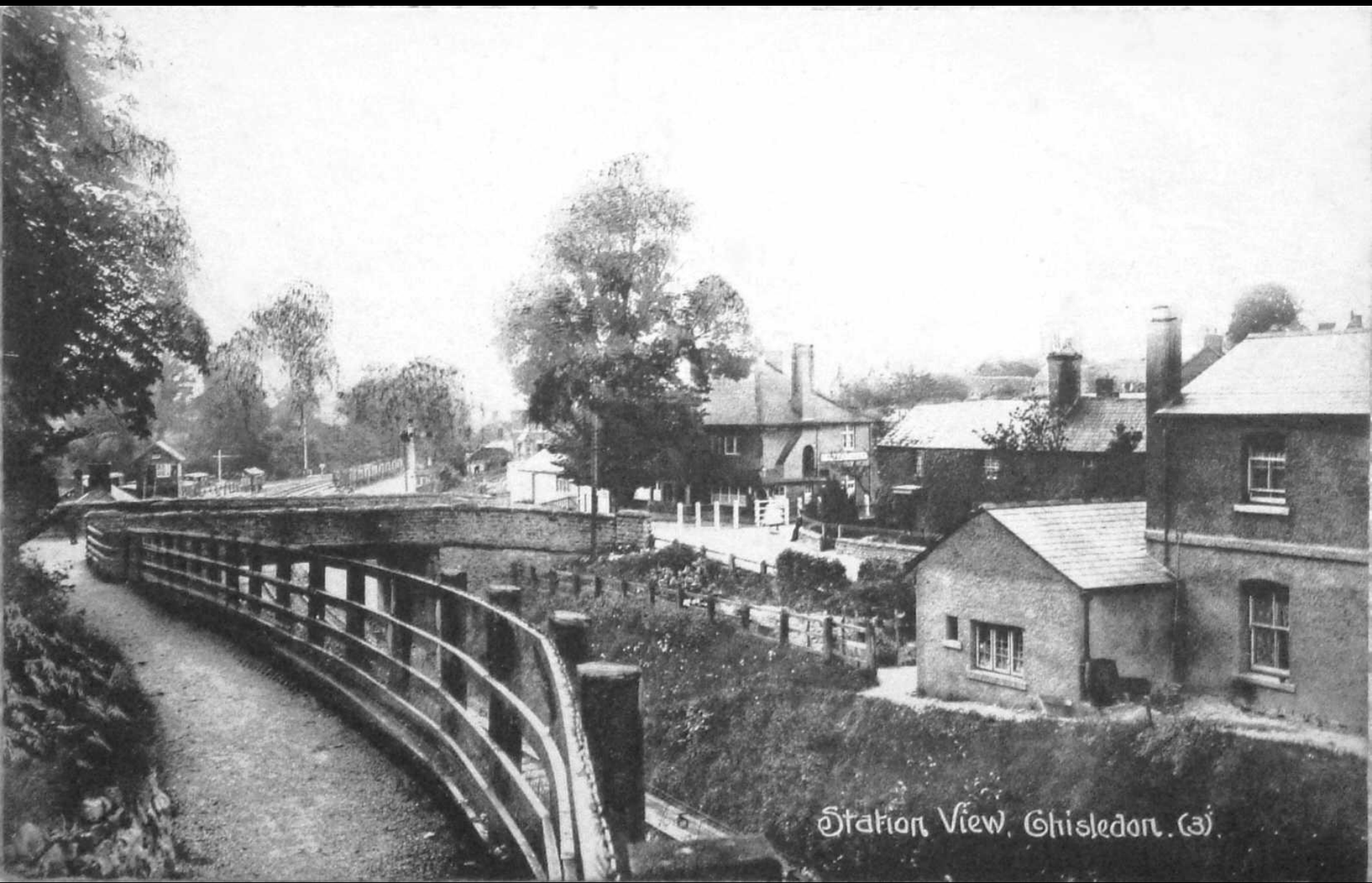
THIS BRICK TOWER, THE SOLE REMAINS OF THE CHISELDON MILL WAS PRESENTED BY THE BOROUGH OF THAMESDOWN AND THE PARISH OF CHISELDON TO THE ST. MARTIN'S PROPERTY GROUP FOR USE AS A CENTRAL SYMBOL AT THE WINDMILL HILL BUSINESS CENTRE

THE WINDMILL IS BELIEVED TO HAVE BEEN BUILT IN 1823 AND WAS STILL FUNCTIONING AS A CORN MILL UNTIL 1894. SOME TIME AFTER THIS DATE THE CAP SAILS AND OTHER WORKINGS WERE REMOVED WHEN THE TOWER WAS CONVERTED TO A WATER STORAGE TANK.

THE PRESENT CAP FAN STAGE SAILS AND OTHER DETAILS WERE EXTENSIVELY RESEARCHED TO REPRODUCE AS ACCURATELY AS POSSIBLE THE ORIGINALLY DESIGNED MILL, AND THE RELOCATION AND RECONSTRUCTION WORKS WERE CARRIED OUT BETWEEN OCTOBER 1983 AND AUGUST 1984.

A MEDIAEVAL POST MILL WAS ONCE LOCATED AT WINDMILL HILL AND THIS TRADITIONAL BUSINESS ACTIVITY IS THE RATIONALE BEHIND THE NAME OF THE CENTRE AND THE RELOCATION OF THE CHISELDON WINDMILL.





Station View, Ghisledon. (3)









(8784)
2nd - SPECIAL ARRANGEMENT
 Railway Correspondence & Travel Society
 "Farewell to the M. & S.W.J.R." Tour
SUNDAY 10th SEPTEMBER, 1961
 Swindon Junction, Ludgershall, Andover,
 Marlborough, Swindon Town, Foss Cross,
 Cheltenham Spa, Gloucester, Stroud,
 Swindon Junction
 (W) For conditions see over



2nd - SPECIAL ARRANGEMENT
 Stephenson Locomotive Society (Mld. Aren)
 Farewell to the M. & S.W.J. Rly Rail Tour
SUNDAY 10th SEPTEMBER, 1961
 Birmingham (Snow Hill) or Leamington
 Spa (General), Cheltenham (Malvern Road)
 Cricciade, Swindon Town, Marlborough,
 Ludgershall, Andover Junction, Swindon
 Works Siding, Rushey Platt, South Cerney,
 Cirencester, Watermoor, Cheltenham
 (Malvern Road), Birmingham (Snow Hill)
 or Leamington Spa (General).
 (W) (8228) For conditions see over

Gt Western Ry Swindon Jn TO Swindon Jn
SWINDON TOWN
via Rushey Platt L'plne
THIRD CLASS
4th Fare 4th
Issued subject to the conditions & regulations set out in the Company's Time Tables & Notices
Swindon Town Swindon Town

5964 2nd - SINGLE SINGLE - 2nd 5964
Swindon Town to
Swindon Town Swindon Town
Chiseldon Chiseldon
CHISELDON
(W) 8d. (W) 8d.
For conditions see over For conditions see over

Great Western Railway
CHISELDON TO
Swindon Town G.W.R.
Via **CHILD**
FIRST CLASS FARE
FOR CONDITIONS SEE BACK

M. T. W. Th. F. S.
Midland & South Western Junc. Ry. Co
WORKMAN'S WEEKLY TICKET
NOT TRANSFERABLE
SWINDON TOWN to
CHISELDON & BACK
(M.&S.W.J.Ry.)
THIRD CLASS 1/6
Available for one week from date hereon
NOTICE.- This ticket is issued subject to the conditions on back. S.2

3035 Gt. Western Ry. Gt. Western Ry. 3035
Swindon Town Swindon Town
TO
SWINDON JUNC.
via Loop Line
THIRD CLASS
6thd. C Fare 6thd. C
Swindon Jn. Swindon Jn
FOR CONDITIONS SEE BACK E.B.

Gt. Western Ry. Gt. Western Ry.
H.M. FORCES ON LEAVE
Chiseldon Chiseldon
TO
SWINDON JUNC.
Via Swindon Town & Loop Line
THIRD CLASS
SWINDON JUNC. SWINDON JUNC
FOR CONDITIONS SEE BACK E.B.

0020 2nd-SINGLE SINGLE-2nd 0020

Cheltenham Spa Malvern Road to
Cheltenham Spa M.Rd Cheltenham Spa M.Rd
Swindon Town Swindon Town
SWINDON TOWN
via Chelworth

(W) 6/2 FARE 6/2 (W)
For conditions see over For conditions see over

102 Cheltenham Spa St. James to 102
Cheltenham Spa St. J. Cheltenham Spa St. J.
Andover Jn Andover Jn
ANDOVER JN
Via Chelworth
(W) 11/8 Fare 11/8 (W)
For conditions see over For conditions see over

0027 2nd-SINGLE SINGLE-2nd 0027
Cheltenham Spa Malvern Road to
Cheltenham Spa M.Rd Cheltenham Spa M.Rd
Swindon Town Swindon Town
SWINDON TOWN
via Chelworth
(W) 7/2 FARE 6/2 (W)

723 Gt. Western Ry. Gt. Western Ry. 723
Savernake L.L. Savernake L.L.
TO
SWINDON TOWN
THIRD CLASS
2/6 C Fare 2/6 C
Swindon Town Swindon Town
FOR CONDITIONS SEE BACK J.D.

1439 Gt Western Ry. Gt Western Ry. 1439
Cirencester Watermoor
TO
SWINDON TOWN
THIRD CLASS
7d C Fare 7d C
Swindon Town Swindon Town
FOR CONDITIONS SEE BACK W.D.

1884 Gt. Western Ry. Gt. Western Ry. 1884
H.M. FORCES ON LEAVE
TIDWORTH TIDWORTH
TO
SWINDON TOWN
THIRD CLASS
Swindon Town Swindon Town
FOR CONDITIONS SEE BACK W.F.